



EQUIPMENT
ACCESSORIES

PRICE SHEET 2025 JUNE

Equipment, Accessories, Welding units



PRICE SHEET: EQUIPMENT 2025

REVISION: 1

ISSUE DATE: 2025 June 1st

LIS MOD17

INTRODUCTION

THE COMPANY	2
LEGEND	7

EQUIPMENT & WELDING UNITS

1 EQUIPMENT	8
PIPE CUTTER.....	8
BEVELING MANUAL TOOL	8
NIRON SOCKET FUSION GAUGE.....	8
CLEANER FOR PE, PP, PVDF, PB	9
HAND SCRAPER.....	9
REVOLVING SCRAPER	9
ROTARY SCRAPER.....	11
TURBO SCRAPER.....	12
TURBO SCRAPER KIT	12
MALE/FEMALE DIES FOR HOLE MENDING	12
ALIGNER FOR ELECTROFUSION FITTINGS.....	13
SERVICE TUBING ALIGNEMENT CLAMPS.....	13
MAIN SIZE ALIGNMENT CLAMPS	14
ALIGNER FOR 6" IPS.....	14
DRILL FOR INSTABRANCHES AND INSTAHEADERS.....	15
DIE PAIR FOR INSTABRANCH™ SOCKET	16
PIPE DRILLING MACHINE FOR WET TAPS.....	19
ADAPTER FOR DRILLING MACHINE	20
DRILLING CUTTER FOR DRILLING MACHINE.....	20
ROUNDING CLAMP FOR PIPE	21
REDUCERS FOR ROUNDING CLAMP	21
2 WELDING UNITS	22
SOCKET WELDING MACHINES	22
WELDING SYSTEM FOR SADDLE JOINTS	22
3 ELECTROFUSION MACHINES	27
MULTIFUNCTION WELDING UNIT INCORPORATED IN PELICAN CASE WITH BARCODE SCANNER.....	27
AUTOMATIC MULTIFUNCTION WELDING UNIT WITH BARCODE SCANNER	31
4 ELECTROFUSION MACHINES - ADDITIONAL EQUIPMENT	34
PAIR OF PINS.....	34
BARCODE SCANNER.....	34
5 EQUIPMENT FOR NIRON CLIMA COOL PRO	36
SELF AMALGAMATING TAPE TO PROTECT WELDING BEAD FROM UV	36
EXTERNAL DEBEADER	36

STANDARD TERMS AND CONDITIONS.....	39
---	-----------



Production, Operations & Administration Center - NUPI AMERICAS INC. - Early Branch (SC)

Nupi Americas has its roots in Italy through NUPI S.p.A. and GECO System S.p.A. – companies both founded **in the early 1970s** – that merged to become NUPIGECO S.p.A. in 2008. In October 2015, NUPIGECO S.p.A., changed its name to NUPI INDUSTRIE ITALIANE S.p.A.

NUPI INDUSTRIE ITALIANE and Nupi Americas together **develop and manufacture piping systems for use in industrial, sanitary (plumbing), HVAC, waterworks, gas and irrigation markets.** Relying on experience and constant growth, our companies have proven to be cutting edge manufacturers, ready to meet the needs of the market while also protecting the environment.

In 1995, following the completion of an extensive Research and Development program, we introduced a new range of **revolutionary piping systems specifically designed for petroleum, chemical and petrochemical applications.** Since then, two special piping systems made of **High Density Polyethylene (HDPE)** have been marketed worldwide: **SMARTFLEX for the downstream and OILTECH for the upstream.**

ELOFIT is the High Density Polyethylene system of electrofusion fittings and special components for the conveyance of water and gas under pressure. It is suitable for the conveyance and distribution of drinking water and alimentary fluids, fuel and inert gases and for water treatment plants, centralized instead irrigation and sewage systems, fire protection systems and pipe relining.

NIRON is a complete Polypropylene pipe and fitting system for the distribution of hot and cold water in plumbing and air conditioning systems, for the conveyance of drinking water and alimentary fluids, industrial plants and for the transport of compressed air and chemical substances.

The pipes and fittings that compose the NIRON range are manufactured using **Random Copolymer Polypropylene (PP-RCT), a plastic material with a special molecular structure ensuring high mechanical resistance and duration even at high temperatures and pressures.**



Registered Office and Headquarters - Busto Arsizio (VA)



Production Facility - Castel Guelfo di Bologna (BO)



Production Facility - Imola (BO)



Production Facility - Borsano di Busto Arsizio (VA)

More product ranges marketed by Nupi Americas are **ELOPRESS** - a complete range of PP fittings for the distribution of drinking water and alimentary fluids. **ELAMID** - a complete piping system made of Polyamide 12 that satisfies high performance requirements in gas supply applications and **SMARTCONDUIT** - designed to contain electrical and communication cables in high groundwater or hydrocarbon- rich environments.

Our trademarked systems are real **system solutions**, covering a wide range of applications, reducing costs, avoiding waste and increasing productivity. Thanks to their quality, these products have passed many different tests and have **obtained the most prestigious certificates** and listings, in line with the regulations of the five continents for the construction of water and gas networks and systems for the transport of fuels.

Producing better quality and being cost effective is the goal, which is made easier everyday by new technology.

Our companies are **continuously investing in research and development programs**, while strengthening our production systems operated by a sophisticated technology that guarantees the highest quality of products. Our facilities use modern state-of-the-art computer controlled production equipment and methods that **guarantee products of the highest quality together with continuous quality control systems**.

On these solid foundations NUPI INDUSTRIE ITALIANE and Nupi Americas demonstrate leadership throughout the thermoplastic piping industry.

Our customers can rely on the best quality materials and precise manufacture instead, obtained through completely automated production systems and continuous on-time deliveries, resulting in timely deliveries which allow planning to be done in real time.

Customer satisfaction is pursued through high quality products and the constant attention to our customers' needs and requirements and by means of an effective team of people in post-sales service effective and precise technical assistance and intensive training of installers.

Niron Clima All-Pro™ is a preinsulated system that is based on our advanced Niron PP-RCT piping systems. It is the newest addition to the growing range of products from Nupi Americas and Nupi Industrie Italiane.

EQUIPMENT

ACCESSORIES



EQUIPMENT & WELDING UNITS



Code:	Nupi Americas item code
Size:	External diameter
SDR	Standard Nominal Ratio: ratio of pipe outside diameter to wall thickness (d_e/s)
Pack - Bag - Carton / Qty	Minimum quantity per pack (Packaging can change without any notice due to company needs)
Pallet/Qty:	Quantity per pallet
Weight lb/p:	Item weight per foot/piece
Volume ft³/p	Item volume - (Cubic feet)
ND	Nominal diameter
Price	Price per feet or per piece <u>All prices shown are in US Dollars</u>

(*) Items with standard brass inserts can be produced with a PP-RCT light grey color

Note: Please consult the factory or your representative for the most current information regarding the parts shown herein.

1 EQUIPMENT

(A)



(B)

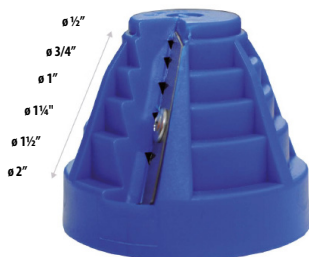


PIPE CUTTER

Material: Metal

Range: $\frac{1}{2}'' \div 4''$

Code	Type	Size	Pack	Weight lb/p	Price Each
00TT1540	A	$\frac{1}{2}'' \div 1\frac{1}{4}''$	1	1.320	\$92.00
19SCUT	B	$1\frac{1}{2}'' \div 4''$	1	2.200	\$274.50



BEVELING MANUAL TOOL

Material: Plastic - Metal

Range: $\frac{1}{2}'' \div 2''$

Notes: Manual tool for beveling the ends of plastic pipes for electrofusion, socket fusion, pipe connection

Code	Size	Pack	Price Each
00SMUSS2063	$\frac{1}{2}'' \div 2''$	1	\$197.00



NIRON SOCKET FUSION GAUGE

Material: Plastic

Range: $\frac{1}{2}'' \div 4''$

Code	Size	Pack	Price Each
00NSFG	$\frac{1}{2}'' \div 4''$	1	\$2,00



CLEANER FOR PE, PP, PVDF, PB

Material: Isopropyl alcohol

Code	Description	Pack	Weight lb/p	Volume ft ³ /p	Price Each
00NSFG	100ml bottle	12	2.500	0.6862	\$99.50



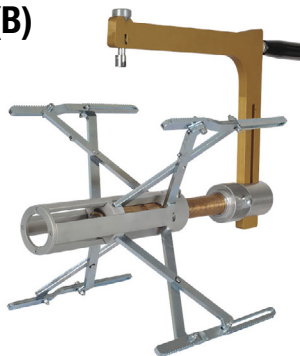
HAND SCRAPER

Code	Pack	Weight lb/p	Volume ft ³ /p	Price Each
00RAM1	10	0.308	0.1716	\$75.70

(A)



(B)



REVOLVING SCRAPER

Material: Metal

Range: 2½" ÷ 16"

Code	Type	Size	Pack	Weight lb/p	Volume ft ³ /p	Price Each
00RAT1A	A	2½" ÷ 6"	1	10.560	85.955	\$1,945.00
00RAT2A	B	8" ÷ 16"	1	18.480	92.559	\$3,383.00

SPARE BLADES FOR SCRAPERS

50LAMARAT1A2A	for 00RAT1A					\$303.00
00RATRITLR	for 00RAT2A					\$275.00

(A)



REVOLVING SCRAPER

Material: Metal

Range: 1½" ÷ 30"

Tool can scrape PE, PE-RC, PP-RCT and PEX pipes.

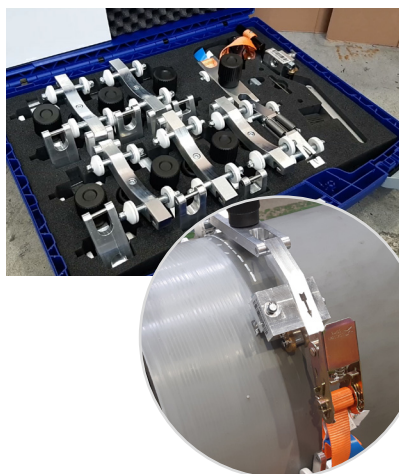
(B)



(C)



Code	Type	Size	Pack	Weight lb/p	Volume ft³/p	Price Each
00RAT1RIT	A	1½" ÷ 6"	1	12.430	0.3904	\$4,840.00
00RAT2RIT	B	2½" ÷ 12"	1	20.240	1.0965	\$5,850.00
00RAT3RIT	C	14" ÷ 30"	1	58.520	5.7351	\$16,700.00
SPARE BLADES FOR SCRAPERS						
00RATRITLR	FOR ALL MODELS					\$275.00



MODULAR ROTARY SCRAPER

Material: Metal

Range: 10" ÷ 40"

The rotary scraper is designed for universal peeling at the pipe end for electrofusion couplings and tees, elbows and electrofusion saddles.

Tool can scraper PE, PE-RC, PP-RCT and PEX pipes.

Code	Size	Pack	Weight lb/p	Price Each
00RAT10	10" ÷ 40"	1	16.72	\$16,100.00



ROTARY SCRAPER

Material: Metal

Range: 1½" ÷ 12"

Tool can scraper PE, PE-RC, PP-RCT and PEX pipes.

Code	Size	Pack	Weight lb/p	Volume ft³/p	Price Each
00RS050	1 ½"	1	1.28	776.82	\$1,012.00
00RS063	2"	1	1.344	882.75	\$1,147.50
00RS075	2 ½"	1	1.382	953.37	\$1,283.00
00RS090	3"	1	1.434	1,094.61	\$1,417.00
00RS110	3 ½"	1	1.514	1,271.16	\$1,417.00
00RS125	4"	1	1.582	1,447.71	\$1,485.00
00RS160	6"	1	1.745	1,871.43	\$1,555.00
00RS200	8"	1	1.936	2,471.70	\$1,620.00
00RS250	10"	1	2.207	3,283.83	\$1,688.00
00RS315	12"	1	2.631	4,449.06	\$1,755.00

(A)



(B)



(C)



(D)



SPARE PARTS FOR ROTARY SCRAPER

Code	REF.	Description	Pack	Price Each
00RSGBTKIT	A	CUTTING BLOCK ASSEMBLY KIT	1	\$803.00
00RSLEKIT	B	REPLACEMENT LEVERS KIT FOR ORBITAL SCRAPER	2	\$21.60
00RSPRKIT	C	REPLACEMENT PIN KIT FOR ORBITAL SCRAPER	1	\$216.00
00RSBKIT	D	REPLACEMENT BLADE	1	\$290.00



TURBO SCRAPER

Material: Metal

Range: ½" ÷ 2"

Code	Size	Pack	Weight lb/p	Price Each
00RATURB020	½"	1	-	\$952.00
00RATURB025	¾"	1	-	\$952.00
00RATURB032	1"	1	1.408	\$952.00
00RATURB040	1¼"	1	1.804	\$1,053.00
00RATURB050	1½"	1	2.244	\$1,053.00
00RATURB063	2"	1	2.200	\$1,136.00



TURBO SCRAPER KIT

Material: Metal

Range: ½" ÷ 2"

Note: Suitcase including turbo scrapers from ½" to 2", manual scraper

Code	Size	Price Each
00RATURBOKIT	½" ÷ 2"	\$7,016.00



MALE/FEMALE DIES FOR HOLE MENDING

Material: Metal

Code	Size holes	Pack	Weight lb/p	Price Each
00MARP7	0.24"max	1+1	0.220	\$225.50
00MARP11	0.40"max	1+1	0.220	\$225.50

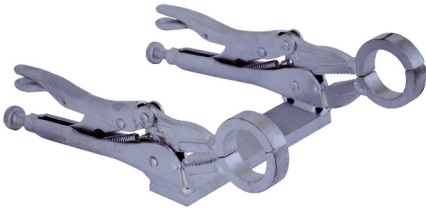


ALIGNER FOR ELECTROFUSION FITTINGS

Material: Metal

Range: $\frac{1}{2}" \div 16"$

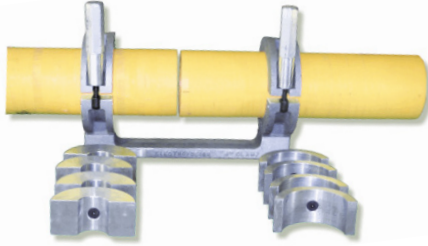
Code	Size	Pack	Weight lb/p	Volume ft ³ /p	Price Each
00ALL063/4	$\frac{1}{2}" \div 2"$	1	10.560	5932	\$1,336.00
00ALL225/4	$1\frac{1}{2}" \div 8"$	1	45.760	22693	\$2,339.00
00ALL315/4	$10" \div 16"$	1	191.400	119187	\$11,694.00



SERVICE TUBING ALIGNEMENT CLAMPS

Material: Metal

Code	Nominal Size IPS	Price Each
TUBING CLAMPS		
12EPIPECLM12C	$\frac{1}{2}"$ CTS	\$340.00
12EPIPECLM12I	$\frac{1}{2}"$ IPS	\$340.00
12EPIPECLM34I	$\frac{3}{4}"$ IPS	\$340.00
12EPIPECLM1C	1" CTS	\$340.00
12EPIPECLM1I	1" IPS	\$340.00
COMBINATION CLAMPS		
12ECLM34I12C12C	$\frac{3}{4}"$ IPS x $\frac{1}{2}"$ CTS x $\frac{1}{2}"$ CTS	\$417.00
12ECLM34I12C12I	$\frac{3}{4}"$ IPS x $\frac{1}{2}"$ CTS x $\frac{1}{2}"$ IPS	\$417.00
REDUCER CLAMPS		
12ERDCLM34I12C	$\frac{3}{4}"$ IPS x $\frac{1}{2}"$ CTS	\$340.00
12ERDCLM1C34I	1" CTS x $\frac{3}{4}"$ IPS	\$340.00
12ERDCLM1I34I	1" IPS x $\frac{3}{4}"$ IPS	\$340.00
12ERDCLM1C12C	1" CTS x $\frac{1}{2}"$ CTS	\$316.00
12ERDCLM1I1C	1" IPS x 1" CTS	\$316.00

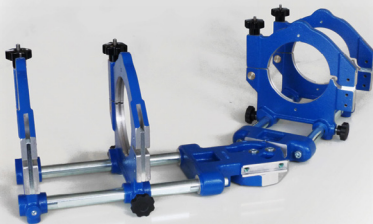


MAIN SIZE ALIGNMENT CLAMPS

Material: Metal

Range: 2" ÷ 8"

Code	Nominal Size IPS	Pack	Weight lb/p	Price Each
00ECLAMP02	2" IPS Clamp	1	2.992	\$776.00
00ESHELLS114	1"¼ Shells	1	2.992	\$192.80
00EHANDLE04	Hex Handle Assembly for 4" Clamp	1	-	\$164.40
00EHANDLE08	Hex Handle Assembly for 8" Clamp	1	-	\$190.00
00ECLAMPREPK	2" Clamp Repair Kit	1	-	\$153.00
00ECLAMPSH114	1"¼ Shells	1	-	\$212.60
00ECLAMPSH02	2" Shells	1	-	\$235.00
00ECLAMPSH03	3" Shells	1	-	\$235.00
00ECLAMPSH04	4" IPS Clamp	1	-	\$865.00
00ECLAMPSH0608	6" Shells for 8" IPS	1	-	\$568.50
00ECLAMPSH08	8" IPS Clamp	1	-	\$1,492.00



ALIGNER FOR 6" IPS

Material: Metal

Range: 6"

Note: Aligner for butt fusion repair sleeve 6" IPS with reduction until 4"

Code	Nominal Size IPS	Pack	Weight lb/p	Price Each
00ALBFRS6	6"-5"-4"	1	41.360	\$3,234.00
00REDBFRS4	REDUCING 6" - 4" IPS	1	191.400	\$716.00

(A)



(B)



(C)



DRILL FOR INSTABRANCHES AND INSTAHEADERS

Material: Metal

Notes: For installation of part codes NGS and NGSF

Code	Type	Size (OUTLET)	Size (MAIN PIPE)	Price Each
00FGS254090	A	1/2" - 3/4"	1 1/4" ÷ 3"	\$350.80
00FGS25110315	A	1/2" - 3/4"	4" ÷ 24"	\$350.80
00FGS3263125	B	1"	2" ÷ 5"	\$350.00
00FGS32160315	C	1"	6" ÷ 24"	\$350.00
00FGS40	C	1 1/4"	ALL	\$417.00
00FGS50	C	1 1/2"	ALL	\$835.00
00FGS63	C	2"	ALL	\$835.00
00FGS75	C	2 1/2"	ALL	\$1,809.00
00FGS90	C	3"	ALL	\$1,809.00
00FGS110	C	3 1/2"	ALL	\$2,214.00
00FGS125	C	4	ALL	\$2,457.00



DIE PAIR FOR INSTABRANCH™ SOCKLET

Material: Metal

Notes: For INSTABRANCH™ side fusion installation (codes NGS, NGSF, NGSFC, NPGS, NPGSCR)

Code	Size (OUTLET)	Size (MAIN PIPE)	Pack	Saddles code Ref.	Price Each
00MATGS202540	½" - ¾"	1¼"	1+1	27NGS2040 - 27NGS2540 - 27NGSFx124050... - 27NGSFx344050...	\$350.00
00MATGS202550	½" - ¾"	1½"	1+1	27NGS2050 - 27NGS2550 - 27NGSFx124050... - 27NGSFx344050...	\$350.00
00MATGS202563	½" - ¾"	2"	1+1	27NGS206375 - 27NGS256375 - 27NGSFx126375... - 27NGSFx346375...	\$350.00
00MATGS202575	½" - ¾"	2½"	1+1	27NGS206375 - 27NGS256375 - 27NGSFx126375... - 27NGSFx346375...	\$350.00
00MATGS202590	½" - ¾"	3"	1+1	27NGS2090110125 - 27NGS2590110125 - 27NGSFx1290110125... - 27NGSFx3490110125...	\$350.00
00MATGS2025110	½" - ¾"	3½"	1+1	27NGS2090110125 - 27NGS2590110125 - 27NGSFx1290110125... - 27NGSFx3490110125...	\$350.00
00MATGS2025125	½" - ¾"	4"	1+1	27NGS2090110125 - 27NGS2590110125 - 27NGSFx1290110125... - 27NGSFx3490110125...	\$350.00
00MATGS2025160	½" - ¾"	6"	1+1	27NGS20160200 - 27NGS25160200 - 27NGSFx12160200... - 27NGSFx34160200...	\$350.00
00MATGS2025200	½" - ¾"	8"	1+1	27NGS20160200 - 27NGS25160200 - 27NGSFx12160200... - 27NGSFx34160200...	\$350.00
00MATGS2025250	½" - ¾"	10"	1+1	27NGS20250315 - 27NGS25250315 - 27NGSFx12250315... - 27NGSFx34250315...	\$350.00
00MATGS2025315	½" - ¾"	12"	1+1	27NGS20250315 - 27NGS25250315 - 27NGSFx12250315... - 27NGSFx34250315...	\$350.00
00MATGS2025355630	½" - ¾"	14" ÷ 24"	1+1	27NGS20355630 - 27NGS25355630 - 27NGSFx12355630... - 27NGSFx34355630...	\$350.00
00MATGS3263	1"	2"	1+1	27NGS326375 - 27NGSFx016375...	\$350.00
00MATGS3275	1"	2½"	1+1	27NGS326375 - 27NGSFx016375...	\$350.00
00MATGS3290	1"	3"	1+1	27NGS3290110125 - 27NGSFx0190110125...	\$350.00
00MATGS32110	1"	3½"	1+1	27NGS3290110125 - 27NGSFx0190110125...	\$350.00
00MATGS32125	1"	4"	1+1	27NGS3290110125 - 27NGSFx0190110125...	\$350.00
00MATGS32160	1"	6"	1+1	27NGS32160200 - 27NGSFx01160200...	\$350.00
00MATGS32200	1"	8"	1+1	27NGS32160200 - 27NGSFx01160200...	\$350.00
00MATGS32250	1"	10"	1+1	27NGS32250315 - 27NGSFx01250315...	\$350.00
00MATGS32315	1"	12"	1+1	27NGS32250315 - 27NGSFx01250315...	\$350.00
00MATGS32355630	1"	14" ÷ 24"	1+1	27NGS32355630 - 27NGSFx01355630...	\$350.00
00MATGS4090	1¼"	3"	1+1	27NGS4090	\$367.50
00MATGS40110	1¼"	3½"	1+1	27NGS40110	\$367.50
00MATGS40125	1¼"	4"	1+1	27NGS40125	\$367.50
00MATGS40160	1¼"	6"	1+1	27NGS40160200	\$367.50
00MATGS40200	1¼"	8"	1+1	27NGS40160200	\$367.50
00MATGS40250	1¼"	10"	1+1	27NGS40250315	\$367.50

follow...



DIE PAIR FOR INSTABRANCH™ SOCKLET

Material: Metal

Notes: For INSTABRANCH™ side fusion installation (codes NGS, NGSF, NGSFC, NPGS, NPGSCR)

Code	Size (OUTLET)	Size (MAIN PIPE)	Pack	Saddles code Ref.	Price Each
00MATGS40315	1¼"	12"	1+1	27NGS40250315	\$367.50
00MATGS40355630	1¼"	14"÷24"	1+1	27NGS40355630	\$367.50
00MATGS5090	1½"	3"	1+1	27NGS5090	\$668.00
00MATGS50110	1½"	3½"	1+1	27NGS50110	\$668.00
00MATGS50125	1½"	4"	1+1	27NGS50125	\$668.00
00MATGS50160	1½"	6"	1+1	27NGS50160	\$668.00
00MATGS50200	1½"	8"	1+1	27NGS50200	\$835.00
00MATGS50250	1½"	10"	1+1	27NGS50250	\$835.00
00MATGS50315	1½"	12"	1+1	27NGS50315	\$835.00
00MATGS50355450	1½"	14"÷18"	1+1	27NGS50355450	\$835.00
00MATGS50500630	1½"	20"÷24"	1+1	27NGS50500630	\$1,169.00
00MATGS63110	2"	3½"	1+1	27NGS63110	\$ 668.00
00MATGS63125	2"	4"	1+1	27NGS63125	\$ 668.00
00MATGS63160	2"	6"	1+1	27NGS63160	\$ 668.00
00MATGS63200	2"	8"	1+1	27NGS63200	\$ 835.00
00MATGS63250	2"	10"	1+1	27NGS63250	\$ 835.00
00MATGS63315	2"	12"	1+1	27NGS63315	\$ 835.00
00MATGS63355450	2"	14"÷18"	1+1	27NGS63355450	\$1,169.00
00MATGS63500630	2"	20"÷24"	1+1	27NGS63500630	\$1,503.50
00MATGS75160	2½"	6"	1+1	27NGS75160	\$1,169.00
00MATGS75200	2½"	8"	1+1	27NGS75200	\$1,169.00
00MATGS75250	2½"	10"	1+1	27NGS75250	\$1,169.00
00MATGS75315	2½"	12"	1+1	27NGS75315	\$1,169.00
00MATGS75355	2½"	14"	1+1	27NGS75355	\$1,169.00
00MATGS75400	2½"	16"	1+1	27NGS75400	\$1,169.00
00MATGS75450	2½"	18"	1+1	27NGS75450	\$1,169.00
00MATGS75500	2½"	20"	1+1	27NGS75500	\$1,169.00
00MATGS75560	2½"	22"	1+1	27NGS75560	\$1,169.00
00MATGS75630	2½"	24"	1+1	27NGS75630	

follow ...

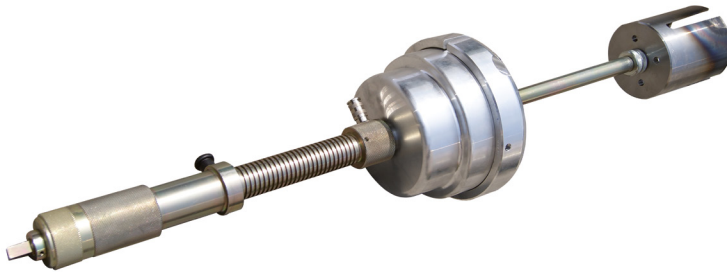


DIE PAIR FOR INSTABRANCH™ SOCKLET

Material: Metal

Notes: For INSTABRANCH™ side fusion installation (codes NGS, NGSF, NGSFC, NPGS, NPGSCR)

Code	Size (OUTLET)	Size (MAIN PIPE)	Pack	Saddles code Ref.	Price Each
00MATGS90160	3"	6"	1+1	27NGS90160	\$1,420.00
00MATGS90200	3"	8"	1+1	27NGS90200	\$1,420.00
00MATGS90250	3"	10"	1+1	27NGS90250	\$1,420.00
00MATGS90315	3"	12"	1+1	27NGS90315	\$1,420.00
00MATGS90355	3"	14"	1+1	27NGS90355	\$1,420.00
00MATGS90400	3"	16"	1+1	27NGS90400	\$1,420.00
00MATGS90450	3"	18"	1+1	27NGS90450	\$1,420.00
00MATGS90500	3"	20"	1+1	27NGS90500	\$1,420.00
00MATGS90560	3"	22"	1+1	27NGS90560	\$1,420.00
00MATGS90630	3"	24"	1+1	27NGS90630	\$1,420.00
00MATGS110125200	3½" - 4"	8"	1+1	27NGS110200 - 27NGS125200	\$2,004.00
00MATGS110125250	3½" - 4"	10"	1+1	27NGS110250 - 27NGS125250	\$2,004.00
00MATGS110125315	3½" - 4"	12"	1+1	27NGS110315 - 27NGS125315	\$2,004.00
00MATGS110125355	3½" - 4"	14"	1+1	27NGS110355 - 27NGS125355	\$2,004.00
00MATGS110125400	3½" - 4"	16"	1+1	27NGS110400 - 27NGS125400	\$2,004.00
00MATGS110125450	3½" - 4"	18"	1+1	27NGS110450 - 27NGS125450	\$2,004.00
00MATGS110125500	3½" - 4"	20"	1+1	27NGS110500 - 27NGS125500	\$2,004.00
00MATGS110125560	3½" - 4"	22"	1+1	27NGS110560 - 27NGS125560	\$2,004.00
00MATGS110125630	3½" - 4"	24"	1+1	27NGS110630 - 27NGS125630	\$2,004.00



PIPE DRILLING MACHINE FOR WET TAPS

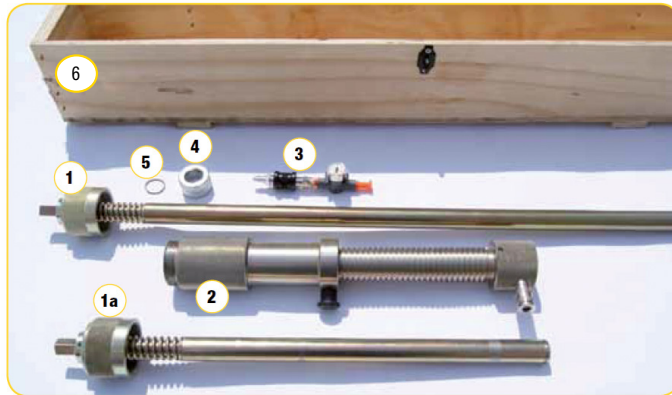
The drilling machine for high volume branch saddles has special sealed chambers to easily drill both pipes conveying gas or water under pressure and sewage pipes.

Thanks to interchangeable cutters (code 00FFxxx) and adapters (code 00FAxxx) it is possible to drill main pipelines from 3" to 40" with service lines from 2" to 8".

The basic machine is composed of:

1. Long shaft to drill under pressure and non-pressured lines
- 1a. Short shaft for non-pressured drilling
2. Body with threaded shaft, vent valve and safety lock
3. Pressure gauge with valve for pressure measuring and depressurizing
4. Ring nut for cutter holding
5. Seeger ring

Ratchet wrench, milling cutters and adapter are available separately.



WATCH OUR VIDEO INSTRUCTIONS ON OUR **You Tube** CHANNEL

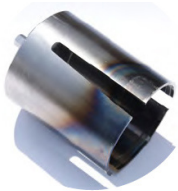


Code	Description	Nominal Size (Pipelines) IPS	Nominal Size (Service line) IPS	Weight lb/p	Volume ft ³ /p	Price Each
00FP	COMPLETE MACHINE	3" ÷ 40"	2" ÷ 8"	30.800	0.4863	\$14,400.00
<i>ACCESSORIES (not included)</i>						
00KPS	SAFETY KIT FOR DRILLING MACHINE (7)					\$462.00
00FPWRENCH	WRENCH 3/4" USAG 237-D					\$1,245.00
<i>SPARE PARTS</i>						
00FPSHAFTL	LONG SHAFT TO DRILL UNDER PRESSURE AND NON-PRESSURED LINES (1)					\$3,360.00
00FPSHAFTS	SHORT SHAFT TO DRILL UNDER PRESSURE AND NON-PRESSURED LINES (1a)					\$2,843.00
00FPGUAGE	PRESSURE GAUGE WITH VALVE FOR PRESSURE MEASURING AND DEPRESSURIZING (3)					\$748.00
00FPNUT	RING NUT (4)					\$147.00
00KITORFP	O'RING KIT (2 ea. SEEGER RING & ELASTIC PLUGS, UPPUER O'RING) (5)					\$56.80
00FPBOX1	TRANSPORT CASE (6)					\$2,984.00



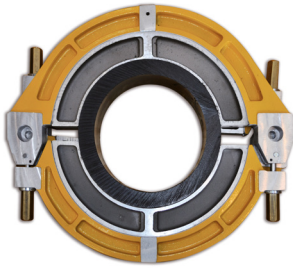
ADAPTER FOR DRILLING MACHINE

Code	Nominal Size (Service line)	SYSTEM	Pack	Weight lb./p.	Price Each
00IFA02	2" IPS	ELOFIT	1	3.960	\$2,985.00
00IFA03	3" IPS	ELOFIT	1	7.920	\$3,954.00
00IFA04	4" IPS	ELOFIT	1	9.240	\$4,306.50
00IFA06	6" IPS	ELOFIT	1	10.120	\$5,553.90
00IFA08	8" IPS	ELOFIT	1	-	\$8,910.00
00FA63	63 mm	NIRON	1	3.960	
00FA90	90 mm	NIRON	1	7.920	
00FA160	160 mm	NIRON	1	10.120	



DRILLING CUTTER FOR DRILLING MACHINE

Code	Nominal Size (Service line) IPS	SYSTEM	Pack	Drilling hole ø	Price Each
00FF0632	2"	ELOFIT / NIRON	1	1.75"	
00FF0903	3"	ELOFIT / NIRON	1	2.75"	
00FF1104	4"	ELOFIT	1	2.75"	\$1.376,60
00FF1606	6"	ELOFIT / NIRON	1	4.72"	\$1.707,00
00FF20008	8"	ELOFIT	1	6.00"	\$1.945,00
					\$2.910,00
					\$5.420,00



ROUNDING CLAMP FOR PIPE

Code	Nominal Size (Service line) IPS	Pack	Weight lb/p	Volume ft³/p	Price Each
00AR630	24"	1	41.360	1.5856	\$16,210.00



REDUCERS FOR ROUNDING CLAMP

Code	Nominal Size (Service line) IPS	Pack	Weight lb/p	Volume ft³/p	Price Each
00ARR250	10"	1+1	6.160	0.1447	\$1,010.00
00ARR315	12"	1+1	19.800	0.5050	\$2,840.00
00ARR355	14"	1+1	16.720	0.4873	\$2,840.00
00ARR400	16"	1+1	14.520	0.5050	\$2,840.00
00ARR450	18"	1+1	12.320	0.5050	\$2,840.00
00ARR500	20"	1+1	19.800	0.7698	\$4,845.00
00ARR560	22"	1+1	21.560	0.7945	\$4,845.00

2 WELDING UNITS



MANUAL SOCKET WELDER WITH CASE

Material: Use for HDPE, PP, PP-R, PB, PVDF

Range: $\frac{1}{2}'' \div 2''$

The machine includes: Socket welder - Fork support - Allen wrench - Pin for sockets & spigots

Die pairs (bushings) included

Notes: Working temperature 500°F ($\pm 32^\circ\text{F}$)

Outside temperature range: 23° ÷ 104°F

Dimensions machine body: 4.5"x 1.9"x 12.5"

Code	Size	Pack	Weight lb/p	Power supply	Busghing included Sizes	Price Each
00NSBEP/110	$\frac{1}{2}'' \div 1''$	1	3.170	110V- 800W	$\frac{1}{2}'' - \frac{3}{4}'' - 1''$	\$2,350.00
00NSBEP63/110	$\frac{1}{2}'' \div 2''$	1	17.600	110V- 800W	$\frac{1}{2}'' - \frac{3}{4}'' - 1'' - 1\frac{1}{4}'' - 1\frac{1}{2}'' - 2''$	\$2,680.00



MANUAL SOCKET WELDER WITH SUPPORT

Material: Use for HDPE, PP, PP-R, PB, PVDF

Range: $\frac{1}{2}'' \div 2''$

The machine includes: Socket welder - Fork support - Bench vice - Allen wrench - Pin for sockets & spigots

Die pairs (bushings) NOT included

Notes: Working temperature 500°F ($\pm 32^\circ\text{F}$)

Outside temperature range: 23° ÷ 104°F

Dimensions machine body: 6"x 1.9"x 14.2"

Code	Size	Pack	Weight lb/p	Power supply	Price Each
00NPCCE/110	$\frac{1}{2}'' \div 2''$	1	4.010	110V/800 W	\$955.00



MANUAL SOCKET WELDER WITH SUPPORT

Material: Metal

Range: $\frac{1}{2}'' \div 4''$

The machine includes: Socket welder - Fork support - Bench vice - Allen wrench - Pin for sockets & spigots - Die pairs (bushings) NOT included

Notes: Working temperature 500°F ($\pm 32^\circ\text{F}$)

Outside temperature range: 23° ÷ 104°F

Dimensions machine body: 6.8"x 1.9"x 15.5"

Code	Size	Pack	Weight lb/p	Power supply	Price Each
00NPCE125/110	$\frac{1}{2}'' \div 4''$	1	8.820	110V/1400 W	\$1,620.00

MALE/FEMALE DIE PAIR FOR WELDER



Material: Metal

Range: $\frac{1}{2}'' \div 4''$

Code	Size	Pack	Weight lb/p	Price Each
00MATRICE20	$\frac{1}{2}''$	1+1	0.242	\$133.00
00MATRICE25	$\frac{3}{4}''$	1+1	0.330	\$147.00
00MATRICE32	1"	1+1	0.506	\$169.00
00MATRICE40	1 $\frac{1}{4}''$	1+1	0.726	\$183.60
00MATRICE50	1 $\frac{1}{2}''$	1+1	1.056	\$238.00
00MATRICE63	2"	1+1	1.386	\$290.00
00MATRICE75A	2 $\frac{1}{2}''$	1+1	2.020	\$335.00
00MATRICE90A	3"	1+1	3.080	\$460.00
00MATRICE110A	3 $\frac{1}{2}''$	1+1	5.140	\$598.00
00MATRICE125A	4"	1+1	4.880	\$680.00



MANUAL WELDING MACHINE FOR SOCKET FUSION

Material: Use for HDPE, PP, PP-R, PB, PVDF

Range: 2" ÷ 5"

The machine includes: Welding machine body with clamps 2"÷5"- Heater 1400W (R 125 Q TFE) - Carrying box
- Die pairs bushings included

Notes: Working temperature 500°F (± 50°F)

Outside temperature range: 12° ÷ 104°F

Dimensions machine body: 24"x26"x 24"

Code	Size	Pack	Weight lb/p	Power supply	Price Each
00STL125L/110	2" ÷ 4"	1	59	110V/1400 W	\$29,737.00

CLAMPS FOR WELDING MACHINE *mod. 00STL125L/110*

Material: Use for HDPE, PP, PP-R, PB, PVDF

Range: 1/2" ÷ 2"

Notes: Optional clamps for 00STL125L/110

Code	Size	Pack	Price Each
00STL125LKIT1202	1/2" ÷ 2"	1	\$2,940.00



MANUAL WELDING MACHINE FOR SOCKET FUSION

Material: Use for HDPE, PP, PP-R, PB, PVDF

Range: 3/4" ÷ 5"

The machine includes: Welding machine body with an electronic socket welder - Steel case complete with sockets and spigots from 3/4 to 5" and tool kit - Pipe support tripod - Sliding trolley - Die pairs bushings included

Notes: Working temperature 356°F ÷ 536°F

Outside temperature range: 23° ÷ 104°F

Dimensions of machine working: 42"x 33"x 22"

Transport wooden case: 59"x 31"x 51"

Code	Size	Pack	Weight lb/p	Power supply	Price Each
00STL125/110	3/4" ÷ 4"	1	220.000	110V/1400 W	\$45,410.00



SOCKET WELDING MACHINE *BODY & CASE*

Material: Use for HDPE, PP, PP-R, PB, PVDF

Range: 2" ÷ 5"

The machine includes: Welding machine body with clamps and frame and transport case

Dimensions transport case: 21.26"x12.2"x 19.1"

Code	Size	Pack	Weight machine body (lb/p)	Power supply	Price Each
00STL125JIGBASIC/110	2" ÷ 4"	1	21	110V/1400 W	\$15,540.00



SOCKET WELDING MACHINE *COMPLETE*

Material: Use for HDPE, PP, PP-R, PB, PVDF

Range: 2" ÷ 5"

The machine includes: Welding machine body with clamps and frame - Transport case - Hand socket welding machine - Socket welder fork support - Bench vice - Allen wrench - Pin for sockets & spigots - Die pairs bushings

Notes: Working temperature 500°F (±50°F)

Outside temperature range: 23° ÷ 104°F

Dimensions of machine body and frame: 15.5"x 13.2"x 15"

Dimensions socket welder: 6.8"x 1.9"x 15.5"

Dimensions transport case: 21.2"x12.2"x 19.1"

Dimensions transport case socket welder: 19.2"x13.5"x 6.6"

Code	Size	Pack	Weight machine body (lb/p)	Weight frame (lb/p)	Weight socket welder (lb/p)	Power supply	Price Each
00STL125JIG/110	2" ÷ 4"	1	21.05	5.5	6.8	110V/1400 W	\$20,220.00

REDUCTION JAWS

Material: Use for HDPE, PP, PP-R, PB, PVDF

Range: ½" ÷ 2"

Notes: Reduction jaws for 00STL125JIG/110 - 00STL125JIGBASIC/110

Code	Size	Pack	Price Each
00STL125JIGRID1202	½" ÷ 2"	1	\$2,560.00



WELDING SYSTEM FOR SADDLE JOINTS

The special fixing system for welding saddle joints 00STL125UP has been conceived and designed to make manifolds on site, guaranteeing the perpendicularity between drilling and welding. The working range of the main pipe goes from $\varnothing 2"$ to $24"$ and on this it is possible to weld branches from $\varnothing \frac{1}{2}"$ to $5"$. The drilling system guarantees a hole centered at 90° for perfect alignment of the fitting on the entire circumference of the pipe.

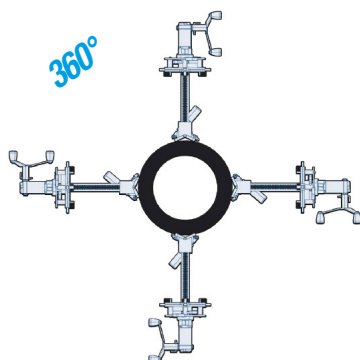
TECHNICAL CHARACTERISTICS:

Overall dimensions with drill $20" \times 15" \times 11"$

Weight of transport case: 15 lb

Weight of standard equipment and case: 49 lb

Weight of machine body with fixing system and handwheel: 17 lb



BASIC EQUIPMENT SUPPLIED WITH THE WELDING UNIT:

- Fixing column with handwheel
- System of marking of the tube from $\varnothing 2" \div 24"$
- Pipe fixing chain
- Spindle to fix the fitting
- Adapter for electric screwdriver drill
- Universal feeder
- Transport suitcase

ADDITIONAL EQUIPMENT AND SPARES:

- Polywelder model 00NPCCE125/110 with transport case (available separately)
- Electric screwdriver (not included)
- Adapter for screwdriver drill (spare part available 00R84854650)
- Driver a for hole cutters (spare part available 00R94650100)



Code	Nominal Size (Service line) IPS	Size branch pipe (\varnothing)	Weight lb/p	Volume	Price Each
00STL125UP	2"÷24"	$\frac{1}{2}" \div 5"$	50	0,003	POA
RICAMBI / SPARE PARTS					
00R94650100		DRIVER FOR CUP CUTTERS			POA
00R84854650		DRILL ADAPTER			POA

3 ELECTROFUSION MACHINES

**PELICAN CASE
LIGHT VERSION**



BASIC EQUIPMENT SUPPLIED WITH THE WELDING UNIT:

- User's handbook on hardware support and quick guide on paper
- USB key (4GB) for data download (welding report and pressure test)
- Integrated shipping box
- Barcode scanner
- Adapters with $\varnothing 4,7$ mm pins

ADDITIONAL EQUIPMENT AND SPARES:

- 00SENS: Pressure test unit

MULTIFUNCTION WELDING UNIT INCORPORATED IN PELICAN CASE WITH BARCODE SCANNER - *LIGHT VERSION*

Incorporated in the most innovative waterproof case (PELI). The case is watertight, waterproof, sand-proof, dust proof and able to withstand harsh environments and shocks. It is certified to withstand temperature rating from -28 to $+194$ °F and is in fact the ideal mean of transportation for sensitive devices.

TECHNICAL CHARACTERISTICS:

Conforms with CE requirements. Conforms with UNI 10566 – MULTIFUNCTION type
Barcode reader conforming with ISO 13950 and manual setting of time and voltage
Illuminated display with 4 lines, 20 characters each
Memory for 10.000 welding cycles
8 Memories with 500 parameters each for pressure tests
Fitting working range up to 40 Amp. maximum peak
Ambient temperature sensor
Power supply: 115V E 50Hz/60Hz
Maximum power: 1500 VA
Minimum power supply: 3 Kw
Output voltage: from 5 to 42 V
Power cable: L= 13.1 ft
Welding cable: L= 13.1 ft
Connectors - $\varnothing 4$ mm (art. 00S8305) with adaptors for $\varnothing 4.7$ mm (00S8203)
Dimensions: 20"x 16"x H 8"
Weight: 35 lb
Degree of protection: IP 54
Working temperature: from 0° to + 131°F

Code	Voltage	Nominal Size (Service line) IPS	Pack	Weight lb/p	Volume ft ³ /p	Price Each
00E9001LP/110	110V	COUPLERS $\frac{1}{2}$ " ÷ 6" SADDLES ALL SIZES	1	35.00	1.4814	\$7,130.00

PELICAN CASE



MULTIFUNCTION WELDING UNIT INCORPORATED IN PELICAN CASE WITH BARCODE SCANNER

Incorporated in the most innovative waterproof case (PELI). The case is watertight, waterproof, sand-proof, dust proof and able to withstand harsh environments and shocks. It is certified to withstand temperature rating from -28 to + 194 °F and is in fact the ideal mean of transportation for sensitive devices.

TECHNICAL CHARACTERISTICS:

Conforms with CE requirements. Conforms with UNI 10566 – MULTIFUNCTION type
Barcode reader conforming with ISO 13950 and manual setting of time and voltage
Illuminated display with 4 lines, 20 characters each
Memory for 10.000 welding cycles
8 Memories with 500 parameters each for pressure tests
Fitting working range up to 70 Amp. maximum peak
Ambient temperature sensor
Power supply: 230V - 115V 50Hz/60Hz
Maximum power: 2000 VA
Minimum power supply: 4 Kw
Output voltage: from 5 to 42 V
Power cable: L= 13.1 ft
Welding cable: L= 13.1 ft
Connectors - ø4 mm (art. 00S8305) with adaptors for ø4.7 mm (00S8203)
Dimensions: 23.78"x 18.33"x 12.08"
Weight: 44 lb
Degree of protection: IP 54
Working temperature: from 0° to + 131°F

BASIC EQUIPMENT SUPPLIED WITH THE WELDING UNIT:

- User's handbook on hardware support and quick guide on paper
- USB key (4GB) for data download (welding report and pressure test)
- Integrated shipping box
- Barcode scanner
- Adapters with ø4,7 mm pins

ADDITIONAL EQUIPMENT AND SPARES:

- 00SENS: Pressure test unit

Code	Voltage	Nominal Size (Service line) IPS	Pack	Weight lb/p	Volume ft³/p	Price Each
00E9001P/110	110V	COUPLERS ½" ÷ 16" SADDLES ALL SIZES	1	44.000	3.0471	\$11,290.00
00E9001P/230	230V	COUPLERS ½" ÷ 16" SADDLES ALL SIZE	1	44.000	3.0471	\$11,290.00

**PELICAN CASE
LIGHT VERSION**



Nupi Welding Cloud



BASIC EQUIPMENT SUPPLIED WITH THE WELDING UNIT:

- User's handbook on hardware support and quick guide on paper
- USB key (4GB) for data download (welding report and pressure test)
- Integrated shipping box
- Barcode scanner
- Adapters with $\varnothing 4,7$ mm pins

ADDITIONAL EQUIPMENT AND SPARES:

- 00SENS: Pressure test unit
- 00BCSCAN: Barcode scanner

MULTIFUNCTION - SMART - WELDING UNIT INCORPORATED IN PELICAN CASE - **LIGHT VERSION**

A new evolved welding unit as the SMARTWELD associated with the APP 'Nupi Welding Cloud' allows a 360° management of all information related to the construction site, the weld itself, the traceability of the products installed, the mapping using GPS tracking as well all testing activities later.

Incorporated in the most innovative waterproof case (PELI). The case is watertight, waterproof, sand-proof, dust proof and able to withstand harsh environments and shocks. It is certified to withstand temperature rating from -28 to + 194 °F and is in fact the ideal mean of transportation for sensitive devices.

TECHNICAL CHARACTERISTICS:

Conforms with CE requirements. Conforms with UNI 10566 – MULTIFUNCTION type
Barcode reader conforming with ISO 13950 and manual setting of time and voltage
Illuminated display with 4 lines, 20 characters each
Memory for 10.000 welding cycles
8 Memories with 500 parameters each for pressure tests
Fitting working range up to 40 Amp. maximum peak
Ambient temperature sensor
Power supply: 115V - 50Hz/60Hz
Maximum power: 1500 VA
Minimum power supply: 3 Kw
Output voltage: from 5 to 42 V
Power cable: L= 13.1 ft
Welding cable: L= 13.1 ft
Connectors - $\varnothing 4$ mm (art. 00S8305) with adaptors for $\varnothing 4.7$ mm (00S8203)
Dimensions: 20"x 16"x H 8"
Weight: 35 lb
Degree of protection: IP 54
Working temperature: from 0° to + 131°F

Code	Voltage	Nominal Size (Service line) IPS	Pack	Weight lb./p.	Volume ft³/p	Price Each
00SMARTWELD/110	110V	COUPLERS $\frac{1}{2}$ " ÷ 6" SADDLES ALL SIZES	1	35.00	1.4814	\$8,770.00

PELICAN CASE



Nupi Welding Cloud



BASIC EQUIPMENT SUPPLIED WITH THE WELDING UNIT:

- User's handbook on hardware support and quick guide on paper
- USB key (4GB) for data download (welding report and pressure test)
- Barcode scanner
- Integrated shipping box
- Adapters with $\varnothing 4,7$ mm pins

ADDITIONAL EQUIPMENT AND SPARES:

- 00SENS: Pressure test unit
- 00BCSCAN: Barcode scanner

MULTIFUNCTION - SMART - WELDING UNIT INCORPORATED IN PELICAN CASE

A new evolved welding unit as the SMARTWELD associated with the APP 'Nupi Welding Cloud' allows a 360° management of all information related to the construction site, the weld itself, the traceability of the products installed, the mapping using GPS tracking as well all testing activities later.

Incorporated in the most innovative waterproof case (PELI). The case is watertight, waterproof, sand-proof, dust proof and able to withstand harsh environments and shocks. It is certified to withstand temperature rating from -28 to + 194 °F and is in fact the ideal mean of transportation for sensitive devices.

TECHNICAL CHARACTERISTICS:

Conforms with CE requirements. Conforms with UNI 10566 – MULTIFUNCTION type
Barcode reader conforming with ISO 13950 and manual setting of time and voltage
Illuminated display with 4 lines, 20 characters each
Memory for 10.000 welding cycles
8 Memories with 500 parameters each for pressure tests
Fitting working range up to 70 Amp. maximum peak
Ambient temperature sensor
Power supply: 230V -115V - 50Hz/60Hz
Maximum power: 2000 VA
Minimum power supply: 4 Kw
Output voltage: from 5 to 42 V
Power cable: L= 13.1 ft
Welding cable: L= 13.1 ft
Connectors - $\varnothing 4$ mm (art. 00S8305) with adaptors for $\varnothing 4.7$ mm (00S8203)
Dimensions: 23.78"x 18.33"x 12.08"
Weight: 44 lb
Degree of protection: IP 54
Working temperature: from 0° to + 131°F

Code	Voltage	Nominal Size (Service line) IPS	Pack	Weight lb/p	Volume ft³/p	Price Each
00SMARTWELD/110	110V	COUPLERS $\frac{1}{2}$ " ÷ 16" SADDLES ALL SIZE	1	44.00	3.0471	\$12,630.00
00SMARTWELD/230	230V	COUPLERS $\frac{1}{2}$ " ÷ 16" SADDLES ALL SIZE	1	44.00	3.0471	\$12,630.00

**SUPER
LIGHT VERSION**



BASIC EQUIPMENT SUPPLIED WITH THE WELDING UNIT:

- User's handbook on paper
- Barcode scanner
- Adapters with $\varnothing 4,7$ mm pins

ADDITIONAL EQUIPMENT AND SPARES:

- 00BCSCAN: Barcode scanner

AUTOMATIC MULTIFUNCTION WELDING UNIT WITH BARCODE SCANNER *SUPER LIGHT VERSION*

TECHNICAL CHARACTERISTICS:

Conforms with CE requirements. Conforms with UNI 10566 – MULTIFUNCTION type
Barcode reader conforming with ISO 13950 and manual setting of time and voltage
Illuminated display with 4 lines, 20 characters each
Fitting working range up to 20 Amp. maximum peak
Ambient temperature sensor
Power supply: 115V - 50Hz/60Hz
Maximum power: 500 VA
Minimum power: 1,5 Kw
Output voltage: from 5 to 42 V
Power cable: L= 13.1 ft
Welding cable: L= 13.1 ft
Connectors - $\varnothing 4$ mm (art. 00S8305) with adaptors for $\varnothing 4.7$ mm (00S8203)
Dimensions: 8,2"x 4,5"x H 7"
Weight: 16 lb
Degree of protection: IP 54
Working temperature: from 0°F to + 131°F

Code	Voltage	Nominal Size (Service line) IPS	Pack	Weight lb./p.	Volume ft ³ /p	Price Each
00E9001SL/110	110V	COUPLERS $\frac{1}{2}" \div 2"$ SADDLES WITH OUTLET $\frac{1}{2}" \div 2"$	1	16.00	0.1412	\$5,500.00

LIGHT VERSION



BASIC EQUIPMENT SUPPLIED WITH THE WELDING UNIT:

- User's handbook on hardware support and quick guide on paper
- USB key (4GB) for data download (welding report and pressure test)
- Shipping box
- Barcode scanner
- Adapters with $\varnothing 4,7$ mm pins

ADDITIONAL EQUIPMENT AND SPARES:

- 00SENS: Pressure test unit

AUTOMATIC MULTIFUNCTION WELDING UNIT WITH BARCODE SCANNER - *LIGHT VERSION*

TECHNICAL CHARACTERISTICS:

Conforms with CE requirements. Conforms with UNI 10566 – MULTIFUNCTION type
Barcode reader conforming with ISO 13950 and manual setting of time and voltage
Illuminated display with 4 lines, 20 characters each
Memory for 10.000 welding cycles
8 Memories with 500 parameters each for pressure tests
Fitting working range up to 40 Amp. maximum peak
Ambient temperature sensor
Power supply: 115V - 50Hz/60Hz
Maximum power: 1000 VA
Output voltage: from 5 to 42 V
Power cable: L= 13.1 ft
Welding cable: L= 13.1 ft
Connectors - $\varnothing 4$ mm (art. 00S8305) with adaptors for $\varnothing 4.7$ mm (00S8203)
Dimensions: 11"x 12"x H 6"
Weight: 29 lb
Degree of protection: IP 54
Working temperature: from 0°F to + 131°F

Code	Voltage	Nominal Size (Service line) IPS	Pack	Weight lb/p	Volume ft ³ /p	Price Each
00E9001L/110	110V	COUPLERS $\frac{1}{2}$ " ÷ 6" SADDLES ALL SIZE	1	29.00	0.4583	\$6,300.00

AUTOMATIC MULTIFUNCTION WELDING UNIT WITH BARCODE SCANNER



BASIC EQUIPMENT SUPPLIED WITH THE WELDING UNIT

- User's handbook on hardware support and quick guide on paper
- USB key (4GB) for data download (welding report and pressure test)
- Shipping box
- Scanner for barcode input
- Adapters with $\varnothing 4,7$ mm pins

ADDITIONAL EQUIPMENT

- 00GPS: Global Positioning System
- 00SENS: Pressure test unit

TECHNICAL CHARACTERISTICS:

Conforms with CE requirements
 Conforms with UNI 10566 – MULTIFUNCTION type
 Barcode reader conforming with ISO 13950 and manual setting of time and voltage.
 Illuminated display with 4 lines, 20 characters each
 Memory for 10.000 welding cycles
 8 Memories with 500 parameters each for pressure tests
 Fitting working range up to 100 Amp. maximum peak
 Ambient temperature sensor
 Power supply: 230V - 115V - 50Hz/60Hz
 Maximum power: 2500 VA
 Output voltage: from 5 to 42 V
 Power cable: L= 13.1 ft
 Welding cable: L= 13.1 ft
 Connectors - $\varnothing 4$ mm (art. 00S8305) with adaptors for $\varnothing 4.7$ mm (00S8203)
 Dimensions: 13"x 18"x 8"H
 Weight: 55.44 lb
 Degree of protection: IP 54
 Working temperature: from 0°F to + 131°F

Code	Voltage	Nominal Size (Service line) IPS	Pack	Weight lb/p	Volume ft ³ /p	Price Each
00E9001/110	110V	$\frac{1}{2}" \div 24"$	1	55.44	0.1872	\$9,700.00
00E9001/230	230V	$\frac{1}{2}" \div 24"$	1	55.44	0.1872	\$9,700.00

4 ELECTROFUSION MACHINES - ADDITIONAL EQUIPMENT

(A)



PAIR OF PINS

(B)



(C)



Code	TYPE	Nominal Size	Pack	Notes	Price Each
0058305	A	4 mm Female	1+1	Connectors	\$178.20
0058203	B	4.0 mm M x 4.7 mm F	1+1	Adapters	\$178.20
0058306		4 mm Female	1+1	Connectors for Super Light Welding Unit	\$178.20
0058202	B	4.7 mm M x 4.0 mm F	1+1	Adapters	\$178.20
00CONN44L	C	4 mm Female Long	1+1	Adapters for preinsulated fittings	\$178.20

BARCODE SCANNER

Barcode reading system



Code	Pack	Price Each
00BCSCAN	1	\$540.00



5. EQUIPMENT FOR NIRON CLIMA COOL PRO



SELF AMALGAMATING TAPE TO PROTECT WELDING BEAD FROM UV

Range: 2" and 4"

Code	Length	Width	Notes	Price Each
00TAPE02	75 ft	2"	White colour	\$280.00
00TAPE04	50 ft	4"	Black colour	\$372.00



EXTERNAL DEBEADER

Code	Size	Price Each
00DEBEADER	6" ÷ 16"	POA

FREIGHT CONDITIONS: All orders shipped domestically are shipped F.O.B. North American Distribution Location. All Italy orders shipped from Italy are shipped F.O.B. Busto Arsizio (VA) Italy. Once the material leaves our dock it becomes the property and responsibility of the consignee. If freight is lost, or damaged, all freight claims must be filed by the consignee. When shipping to a job site, freight will be third party billed. CUSTOMERS WILL HAVE ONE WEEK FROM THE DATE OF RECEIPT OF AN ORDER TO REPORT LOST, MISSING OR DAMAGED MATERIALS FROM THE SHIPMENT.

FULL FREIGHT ALLOWANCE: To meet the full freight allowance, orders must be for immediate complete shipment to one location within the contiguous United States or Canada. Each shipment for a project will be subject to the schedule below based on the amount of the follow-up order (i.e. the amount is not cumulative if follow-up orders are placed for the same project). Shipments to Alaska, Puerto Rico, Hawaii or for export are not freight allowed, except for the mainland portion of the freight. For shipments to Alaska, Hawaii, Puerto Rico or for export, the freight allowances shown below, for qualified items, are for shipment to East Coast, Gulf Coast or West Coast Ports only.

For orders totaling between \$0 and \$30,000 involving fittings-only and/or small equipment, the freight cost will be the actual amount billed. Orders greater than \$30,000 net, involving fittings-only and/or small equipment, will be freight allowed.

For orders totaling between \$0 and \$60,000 involving pipe, the freight cost will be the actual amount billed. Orders greater than \$60,000 net, involving pipe, will be freight allowed.

Projects involving prefabricated subassemblies, or AllPro Preinsulated Piping Products of any kind are not freight allowed. All Shipments involving fabricated subassemblies and AllPro products will have the full freight costs billed to the customer (except where the customer has arranged for their own shipping).

Air freight shipments or expedited shipments are not freight allowed. Air freight shipments and expedited forms of delivery will be negotiated and agreed to in each circumstance. Customers may alternatively arrange for their own transportation, or may arrange for the freight to be billed to a third party account by specifying this on the purchase order. Next day air orders must be received by 11:00 a.m. EST for next day service.

For pipe shipments involving less than standard full package (bag) quantities of any given size, a 10% surcharge shall apply, plus the cost for providing protective packaging and the full transportation cost. For any pipe shipments involving full bag quantities, but less than a full lift quantity, no surcharge shall apply, however Nupi will charge for any and all protective packaging that is required in order to maintain the integrity of the pipe during shipping and allow for shipment by standard over-the-road shipping carriers. For pipe orders that are less than full freight allowed, the full freight cost shall be charged.

The minimum accepted net order amount shall be \$100 in all circumstances. For orders placed that are less than \$100, the net value of the order shall be increased by an amount so that the total order will be billed at \$100 plus the applicable amount for shipping percentage based on \$100 net order value. The customer will have 24 hours after notice of order confirmation to increase the amount or type of parts being ordered to be greater than or equal to \$100 to avoid the paying the surcharge.

PAYMENT TERMS: All invoices are due net 30 days from the date of the invoice, with all Past Due accounts subject to a service charge of 1.5% per month.

RETURN POLICY: All orders are non-cancellable. Pipe is non-returnable. Requests for return of fittings are subject to review and approval by the Nupi Sales Manager. If the return is approved, fittings may be returned up to a maximum 10% of the value of fittings sold on an order, subject to a 35% restocking charge if the fittings are returned in fully resalable condition. Freight cost for the return is not included and must be paid by the company requesting the return. The net value, if the return is approved, will be issued in the form of a credit against future orders. Products that are ordered and have been packaged and awaiting shipment and the order for such materials are subsequently cancelled prior to shipping will be treated as a request for return and subject to the same rules and conditions stated above.

ORDER ACCEPTANCE: No price list, literature, catalogue, website or other material describing our products is to be construed as an offer to sell same. Orders are subject to acceptance by us at our offices in Houston, TX. Your order, when shipped by us, shall be the complete contract between us, subject to, and incorporating therein, the terms and conditions, herein set forth, and any provisions or terms contained in the order submitted to us that are not consistent with our terms and conditions shall not be valid. Prices and discounts contained in any of our price lists or posted on our website are subject to change without notice.

LIMITED WARRANTY (FOR NON-INDUSTRIAL AND NON-CHEMICAL INTALLATIONS):

Nupi Americas warrants that products sold by it which are included in its NIRON Piping System shall be of good materials and workmanship and free from functional defects for a period of thirty (30) years from the date of sale, excepting valves, gaskets and o-rings; products other than pipes and fittings shall be of good materials and workmanship and free from functional defects for a period of one (1) year from the date of sale; provided that such products are properly installed in accordance with the specifications and published instructions of Nupi Americas by qualified installers who have been trained and certified by Nupi Americas or its authorized representatives. In non-recirculating potable hot water systems where Niron Clima PP-RCT pipe is installed with an SDR that is thinner than SDR 7.4, the base warranty for the entire system (including the recirculating hot water portions) will be reduced to five (5) years instead of thirty (30) years. In potable hot water systems where an Niron Clima PP-RCT pipe is installed with an SDR that is thinner than SDR 7.4 in any recirculating portions of the system, the warranty will be null and void. In potable hot water systems where the process conditions of the hot water are outside of a normal range (temperatures greater than 140°F and/or free chlorine at levels greater than 2.0 ppm), the warranty will be null and void. In industrial piping systems or systems involving the transportation of chemicals of any kind in Niron Clima PP-RCT, CoolPro, Nero or AllPro piping systems, the warranty specifically excludes damage due to the effects of the chemicals acting upon the materials.

These respective warranties shall become immediately null and void if the products to which they apply due to any of the following: (i) are employed in applications not recommended by Nupi Americas; (ii) are installed by anyone other than an installer trained and certified by Nupi Americas or its authorized representatives; (iii) were installed in a manner which fails to comply with written installation instructions of Nupi Americas; (iv) were installed in a manner that does not comply with common installation or use practices and existing building and plumbing codes and legal requirements; (v) was not at all times used in a manner consistent with its intended use; (vi) was not at all times used in installations and environments acceptable to its material and design specifications; (vii) was modified, altered or repaired by anyone other than the Seller; (viii) was not properly subjected to and passed common testing methods (including pressure testing recommendations of Nupi Americas and the authority having local jurisdiction) immediately after the product's installation and before the product is put into service; (ix) Where installed in direct exposure to UV if the installed NIRON piping system is other than Cool-Pro or Nero. In the event of a system malfunction or leak caused by defective Nupi Americas' warranted materials (and not by incorrect installation, incorrect handling procedures or by jobsite or installation damage), a reasonable amount will be allowed for repair materials and repair labor as long as the amount is pre-approved by Nupi Americas. In order to qualify for a warranty remedy described in the previous sentence, you must contact Nupi Americas in advance and receive a written authorization for this remedy from an authorized Nupi Americas' representative. Repair materials, repair labor and freight expenses not authorized in writing in advance by Nupi Americas in this way will not be compensated. In the event of a leak occurring in a factory manifold, you may contact Nupi Americas for either a free replacement manifold or any parts that are reasonably needed to repair such a leak (freight prepaid). Note that Nupi Americas limits its warranty to its piping, valves and accessories, fittings, manifolds and field connections that are properly made in accordance with the written instructions of Nupi Americas by an installer who is trained and certified by Nupi Americas or its authorized representatives, subject to the other limitations described above. The copper portion of copper transition parts are not included in these warranties and are instead subject to a separate limited lifetime warranty from the original manufacturer that is available upon request.

Evidence of tampering, mishandling, misuse or abuse, neglect, accidental damage, freeze damage or unauthorized repairs that cause damage to Nupi Americas' warranted products will void any warranty coverage for those particular products.

Nupi Americas provides a complete plumbing system offering so that it is possible to complete an installation with Nupi Americas' products. However, it is possible that other manufacturers' piping and/or fittings may be installed in any given installation. Providing that the piping and/or fittings are manufactured to the same ASTM and CSA standards governing Niron's products, and have been certified by a recognized third-party testing agency, the NIRON product in the given installation will continue to be covered under this warranty. In the event of a system malfunction or leak that has other piping and/or fitting manufacturers' components installed within the failed system, Nupi Americas will be responsible only for proven defects in material or workmanship in the Nupi Americas products. Products manufactured by another company should be reported to that manufacturer for its warranty response.

These limited warranties are in lieu of all other warranties, express or implied, including, without limitation, those concerning merchantability or fitness for a particular purpose. These limited warranties are also in lieu of any other possible liabilities of Nupi Americas, whether alleged to have arisen by agreement or by operation of law, respecting the sale, installation, use or function of Nupi Americas' products, including, without limitation, claims of negligence, gross negligence, strict liability or any other tort.

LIMITATION OF LIABILITY: If a claim arises as the result of a product defect, Nupi Americas shall cover losses caused to third parties for property damages and bodily injury or incidental damages in those situations where Nupi America's Liability Insurance Policy provides coverage for such losses, up to the coverage amounts provided in such policy and subject to all of the terms, conditions and exclusions of such policy (Policy ITCANY05134 Issued by Chubb European Group SE).

No person is authorized by Nupi Americas to accept for it any other liability of any kind in connection with the sale or use of products sold and/or marketed by it.

All requests and notices under this Warranty shall be directed to: Nupi Americas, Attn: Customer Service 314 Commerce Parkway, Early Branch, SC 29916; Tel: 803-398-3579, Fax: 803-398-3639

SHIPPING DATES – DELAYS – SHORTAGE CLAIMS: Promises of shipping dates are estimates, and as such, cannot be guaranteed. Nupi Americas will not be liable for any delay in a delivery. Any claims for shipping errors, shortages or defects must be made to Nupi Americas within 24 hours of receipt of the goods. Buyer shall be required to make timely payment to seller of any amount which is undisputed, or not subject to such claims.

TAXES: Any sales or manufacturers' taxes are to be paid by the buyer, including those imposed under any future statutes.



Nupi Americas, Inc.

314 Commerce Parkway
Early Branch - SC 29916 - U.S.A.
ph. +1 803-398-3579
fax: +1 803 398 3639

info@nupiamericas.com
www.nupiamericas.com

