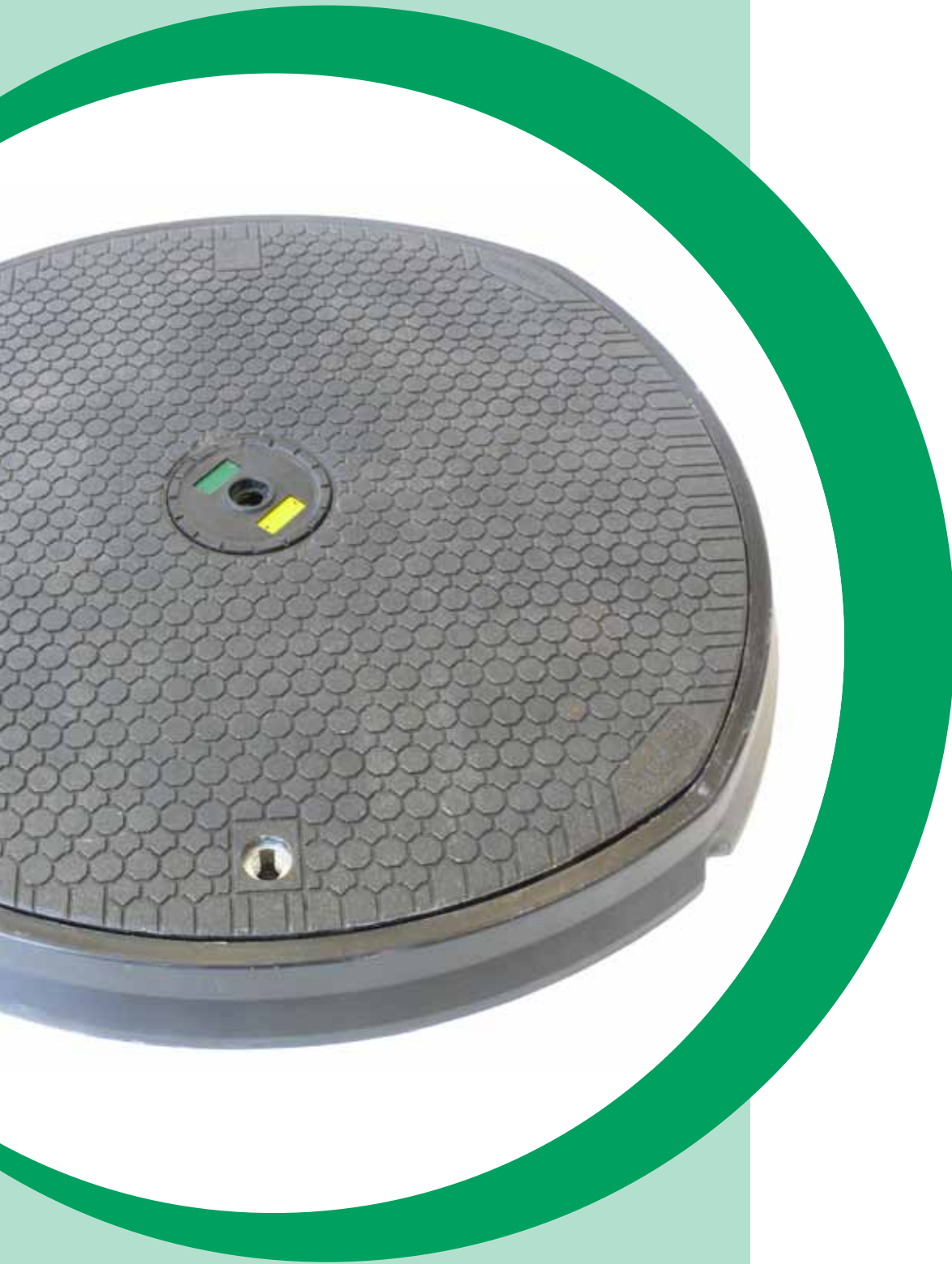
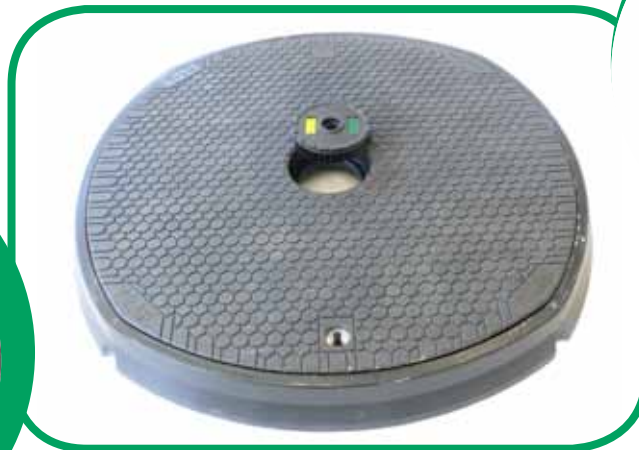


# SMARTFLEX™

## Smartflex Composite Manhole Covers



# SMARTFLEX MANHOLE COVERS



**SMARTFLEX Composite Manhole Covers** are designed to offer a light weight alternative to steel manhole covers. These covers are class C250 (up to 25 tons) and D400 (up to 40 tons) in accordance with EN124 standard.

**SMARTFLEX Composite Manhole Covers** combine technology, design and composite materials with reliable manufacturing processes to deliver 'fit for purpose' covers that offer an attractive commercial solution.

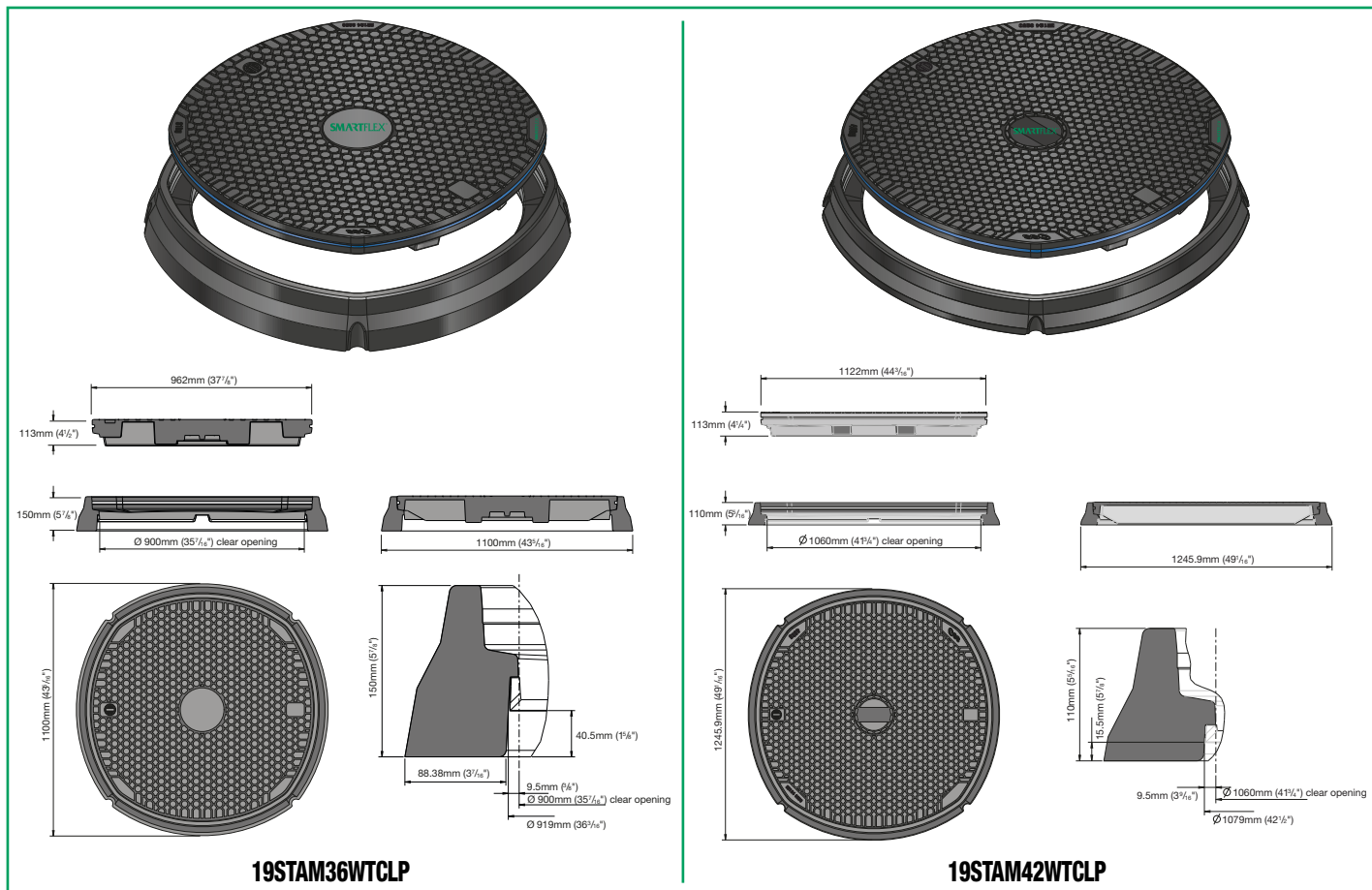
The surface of **SMARTFLEX Composite Manhole Covers** has a **better slip-resistance** than metal covers when wet, dry, or worn state and is comparable with a good highway surface. One of the benefits of **SMARTFLEX Covers** is single person removal and replacement without risk of injury, when using the **specific ergonomic lifting tool**.

**SMARTFLEX Composite Manhole Covers** are robust and their top surface has an **estimated life of 15 to 18 years** based on 15,000 Foot Contact Events on the same contact point each day for the whole period. A wear indicator is fitted to all our standard covers. Longevity, ease of moving and superior performance allows a **reduction in maintenance programs**.

FITTING A **SMARTFLEX COMPOSITE MANHOLE COVER** IS THE BEST “WHOLE LIFE” CHOICE.

## Benefits of the SMARTFLEX Composite Manhole Covers:

- Light enough for one person to handle
- Exceeds the H20 and HS20
- Exceeds the EN124 (25 tons)
- Class C250 and D400 in accordance with EN124 standard
- Structurally Superior
- Anti-slip Surface
- Ease of Removal/Replacement
- Low wear characteristics
- Security locking
- Water, sand and airtight
- Fire proof
- Electrically non-conductive
- Thermal insulation
- Reduced Maintenance programme
- Pry Points and key housings
- Venting
- Poor thermal conductivity
- Non-corrosive
- Automatic meter reading
- Secure in the location
- 15 year product guarantee
- No risk of theft for re-sale value as happens with metal covers



- Black is the standard colour.
- All **SMARTFLEX composite manhole covers** are solid. We do not compromise the quality with cheap wood or foam fillers.
- The 42" version is available with and without central dip cap with product identifying colored flag.
- SMARTFLEX now offers a better solution for your raintight applications with the **Cam Lock Cover**.

Part Number	Description	Weight	
		KG	LB
<b>19STAM36WTCLP</b>	960 mm (36") Raintight composite manhole cover, frame, seal, plug and lock	46	101
<b>19STAM42WTCLP</b>	1120 mm (42") Raintight composite manhole cover, frame, seal, plug and lock	53	117
<b>19STAM36WTCLPDC</b>	960 mm (36") Raintight composite manhole cover, frame, seal, plug and lock and dip cap	46	101
<b>19STAM42WTCLPDC</b>	1120 mm (42") Raintight composite manhole cover, frame, seal, plug, lock and dip cap	53	117

Two different removal/replacement tools are also available, with or without seal breaker.





**Registered Office and Headquarters**

via Stefano Ferrario  
21052 Busto Arsizio (VA) Italy  
ph. ++39 0331 344211  
fax ++39 0331 351860  
info@nupigeco.com  
www.nupigeco.com

**Production, Operations and Administration Centre**

via dell'Artigianato 13  
40023 Castel Guelfo (BO) Italy  
ph. ++39 0331 344211  
fax ++39 0542 670851  
info@nupigeco.com  
www.nupigeco.com

**Production Facility**

via Colombarotto 58  
40026 Imola (BO) Italy  
ph. ++39 0331 344211  
fax ++39 0542 670851  
info@nupigeco.com  
www.nupigeco.com

**U.S.A. Subsidiary**  
**Nupi Americas, Inc.**  
1511 Superior Way,  
Houston - TX 77039 - U.S.A.  
Phone ++1 281 590 4471  
Fax ++1 281 590 5268  
info@nupiamericas.com  
www.nupiamericas.com

