

NIRON CLIMA PP-RCT PIPE - SDR 17 SERIES

Submittal Information • Revision A: December 1, 2015

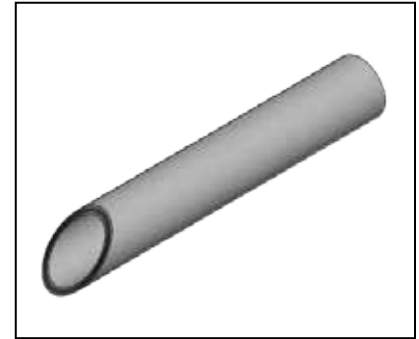


PROJECT INFORMATION

Job Name/Location: _____
 Engineer: _____ Date Submitted: _____
 Contractor: _____ Submitted By: _____
 Manufacturer's Rep.: _____ Approved By: _____

TECHNICAL DATA

Material: PP-RCT (beta crystalline random copolymer polypropylene)
 Standard Grade Hydrostatic: 60 psi @ 180°F
 Ratings for SDR 17 (50 year): 90 psi @140°F
 168 psi @ 68°F
 Linear Expansion Rate: 0.23 in/10°F/100 ft



PRODUCT INFORMATION AND APPLICATION USE

Niron Clima PP-RCT pipe is a multilayer pipe extruded with a middle layer containing fiberglass, and is solid grey in color. The pipe is used for a variety of HVAC, compressed air and chemical piping services. The middle layer with added fiberglass material restricts the thermal expansion and contraction of the pipe compared to monolayer materials and is therefore useful for applications with wide temperature swings. The middle layer with added fiberglass also helps to stiffen the pipe which assists in aboveground support. Niron Clima PP-RCT piping may also be used in hot and cold potable water services.

| | DESCRIPTION | PART NUMBER | I.D. | O.D. | WEIGHT |
|--------------------------|---|---------------|-------|-------|--------|
| <input type="checkbox"/> | ½" Niron Clima PP-RCT Pipe, SDR 7.3, 20' Length | 27TNIRCL2073 | 0.57 | 0.79 | 0.11 |
| <input type="checkbox"/> | ¾" Niron Clima PP-RCT Pipe, SDR 7.3, 20' Length | 27TNIRCL2573 | 0.71 | 0.98 | 0.17 |
| <input type="checkbox"/> | 1" Niron Clima PP-RCT Pipe, SDR 9, 20' Length | 27TNIRCL329 | 0.98 | 1.26 | 0.21 |
| <input type="checkbox"/> | 1 ¼" Niron Clima PP-RCT Pipe, SDR 11, 20' Length | 27TNIRCL4011 | 1.29 | 1.57 | 0.30 |
| <input type="checkbox"/> | 1 ½" Niron Clima PP-RCT Pipe, SDR 11, 20' Length | 27TNIRCL5011 | 1.61 | 1.97 | 0.46 |
| <input type="checkbox"/> | 2" Niron Clima PP-RCT Pipe, SDR 17, 20' Length | 27TNIRCL6317 | 2.19 | 2.48 | 0.48 |
| <input type="checkbox"/> | 2 ½" Niron Clima PP-RCT Pipe, SDR 17, 20' Length | 27TNIRCL7517 | 2.60 | 2.95 | 0.69 |
| <input type="checkbox"/> | 3" Niron Clima PP-RCT Pipe, SDR 17, 20' Length | 27TNIRCL9017 | 3.12 | 3.54 | 0.98 |
| <input type="checkbox"/> | 4" Niron Clima PP-RCT Pipe, SDR 17, 20' Length | 27TNIRCL11017 | 3.82 | 4.33 | 1.45 |
| <input type="checkbox"/> | 5" Niron Clima PP-RCT Pipe, SDR 17, 20' Length | 27TNIRCL12517 | 4.34 | 4.92 | 1.86 |
| <input type="checkbox"/> | 6" Niron Clima PP-RCT Pipe, SDR 17, 20' Length | 27TNIRCL16017 | 5.56 | 6.30 | 3.04 |
| <input type="checkbox"/> | 8" Niron Clima PP-RCT Pipe, SDR 17, 20' Length | 27TNIRCL20017 | 6.94 | 7.87 | 4.74 |
| <input type="checkbox"/> | 10" Niron Clima PP-RCT Pipe, SDR 17, 20' Length | 27TNIRCL25017 | 8.68 | 9.84 | 7.32 |
| <input type="checkbox"/> | 12" Niron Clima PP-RCT Pipe, SDR 17, 20' Length | 27TNIRCL31517 | 10.94 | 12.40 | 11.60 |
| <input type="checkbox"/> | 14" Niron Clima PP-RCT Pipe, SDR 17, 20' Length | 27TNIRCL35517 | 12.34 | 13.98 | 14.67 |
| <input type="checkbox"/> | 16" Niron Mono Grey PP-RCT Pipe, SDR 17, 20' Length | 27TNIRCL40017 | 13.89 | 15.75 | 18.55 |
| <input type="checkbox"/> | 18" Niron Mono Grey PP-RCT Pipe, SDR 17, 20' Length | 27TNIRCL45017 | 15.44 | 17.72 | 23.41 |
| <input type="checkbox"/> | 20" Niron Mono Grey PP-RCT Pipe, SDR 17, 20' Length | 27TNIRCL50017 | 17.37 | 19.69 | 28.83 |
| <input type="checkbox"/> | 22" Niron Mono Grey PP-RCT Pipe, SDR 17, 20' Length | 27TNIRCL56017 | 19.45 | 22.05 | 35.97 |
| <input type="checkbox"/> | 24" Niron Mono Grey PP-RCT Pipe, SDR 17, 20' Length | 27TNIRCL63017 | 21.88 | 24.80 | 45.43 |

| LISTINGS | CODES | STANDARDS | CONTACT INFO |
|-----------------------------------|--|--|---|
| uNSF-14; ANSI/NSF-61; ICC-ES; UPC | ICC; IPC; IMC; UPC; UMC; NSPC; HUD; NPC of Canada; NBC of Canada | ANSI/NSF 14; ANSI/NSF 61; ASTM F2389; ASTM F2023; CSA B137.11; ASTM E-84; CAN/ULC S102.2 | Nupi Americas, Inc. 1511 Superior Way Houston, TX 77039 Phone: 281-590-4471 Fax: 281-590-5268 www.nupiamericas.com |