



## Multilayer Pipe and TiteFit™ Fittings for Compressed Air Systems



## PRICE SHEET

JULY 2021



*All Prices Shown Are in US Dollars*

**PRICE SHEET:** FLEXTITE 2021  
**REVISION:** 02  
**ISSUE DATE:** 2021 JULY

INTRODUCTION	
THE COMPANY .....	2
HIGHLIGHTS .....	4
THE SYSTEM.....	5
1. PIPING .....	6
2. FITTINGS .....	7
3. EQUIPMENT .....	15
4. FASTER INSTALLATION IN 3 STEPS.....	16
5. FASTER REPLACEMENT .....	18
SALES TERMS AND CONDITIONS .....	20

**Nupi Americas has its roots in Italy through NUPI S.p.A. and GECO System S.p.A. – companies both founded in the early 1970s** – that merged to become NUPIGECO S.p.A. in 2008. In October 2015, NUPIGECO S.p.A. changed its name to NUPI INDUSTRIE ITALIANE S.p.A.

NUPI INDUSTRIE ITALIANE and Nupi Americas together **develop and manufacture piping systems for use in industrial, sanitary (plumbing), HVAC, waterworks, gas and irrigation markets.** Relying on experience and constant growth, our companies have proven to be cutting edge manufacturers, ready to meet the needs of the market while also protecting the environment.

NUPI's FlexTite product line is a complete system designed for the transportation of compressed air and gasses. The system integrates FlexTite multilayer UV protected pipe with our Niron or Niron Clima Cool Pro PP-RCT for large diameter supply lines.

Niron is a complete Polypropylene pipe and fitting system for the distribution of hot and cold water in plumbing and air conditioning systems, for the conveyance of drinking water and alimentary fluids, industrial plants and for the transport of compressed air and chemical substances.

The pipes and fitting that compose the Niron range are manufactured using Random Copolymer Polypropylene (PP-RCT), a plastic materials with a special molecular structure ensuring high mechanical resistance and duration even at high temperatures and pressures.

Niron Clima Cool Pro offers the same features and benefits as standard Niron, except a white 30 year U.V. outside layer is added on the product.



Production, Operations & Administration Center - NUPI AMERICAS INC. - Early Branch (SC)



More product ranges marketed by Nupi Americas are **ELOPRESS** - a complete range of PP fittings for the distribution of drinking water and alimentary fluids. **ELAMID** - a complete piping system made of Polyamide 12 that satisfies high performance requirements in gas supply applications and **SMARTCONDUIT** - designed to contain electrical and communication cables in high groundwater or hydrocarbon- rich environments.

Our trademarked systems are real **system solutions**, covering a wide range of applications, reducing costs, avoiding waste and increasing productivity. Thanks to their quality, these products have passed many different tests and have **obtained the most prestigious certificates** and listings, in line with the regulations of the five continents for the construction of water and gas networks and systems for the transport of fuels.

Producing better quality and being cost effective is the goal, which is made easier everyday by new technology.

Our companies are **continuously investing in research and development programs**, while strengthening our production systems, operated by a sophisticated technology that guarantees the highest quality of products. Our facilities use modern, state-of-the-art computer controlled production equipment and methods that **guarantee products of the highest quality together with continuous quality control systems**.

On these solid foundations NUPI INDUSTRIE ITALIANE and Nupi Americas demonstrate leadership throughout the thermoplastic piping industry.

Our customers can rely on the best quality materials and precise manufacture, obtained through completely automated production systems and continuous on-time deliveries, resulting in timely deliveries which allow planning to be done in real time.

**Customer satisfaction is pursued through high quality products and the constant attention to our customers' needs and requirements** and by means of an effective team of people in post-sales service, effective and precise technical assistance and intensive training of installers.

**Nupi's All-Pro™ is a preinsulated system that is based on our advanced Niron PP-RCT piping systems.** It is the newest addition to the growing range of products from Nupi Americas and Nupi Industrie Italiane.



Registered Office and Headquarters - Busto Arsizio (VA)



Production Facility - Castel Guelfo di Bologna (BO)



Production Facility - Imola (BO)



Production Facility - Borsano di Busto Arsizio (VA)

State of the Art Products for the transport of compressed air and gases.



- Commercial systems
- Industrial systems
- Industrial installations
- Mining industry
- Petroleum industry
- Chemical industry
- Petrochemical industry
- Steel industry
- Food processing

## ***Our strengths***

- Exports established in more than 70 countries on 5 continents
- Worldwide after-sales assistance
- Extensive R & D department
- Production of pipes and fittings from ½" to 40"
- Training centers established worldwide



**FlexTite™** is a system composed of **multilayer pipes** and **TiteFit™ fittings** for compressed air systems installations.

## MULTILAYER PIPE

The **PIPE** used in **FlexTite™** systems is a multilayer pipe composed of 5 layers perfectly joined to each other thanks to an innovative technological process made possible by the use of avant-garde equipment.

- White UV Resistant high density polyethylene (HDPE)
- Adhesive layer
- Aluminium
- Adhesive layer
- Raised temperature polyethylene (PE-RT)

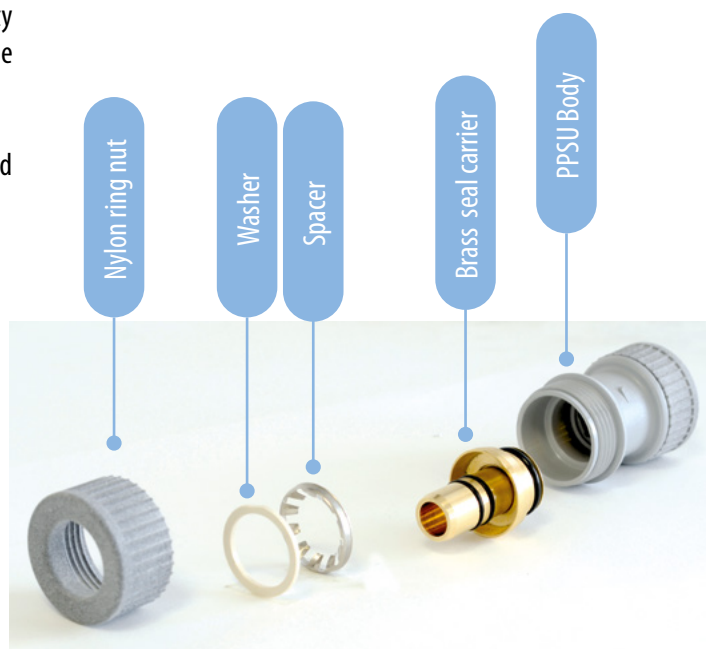
The first extruded PE-RT layer provides resistance to high temperatures. An adhesive layer is added to this pipe to wrap the aluminium layer in the next phase. The fully-welded aluminium layer is of different thickness depending on the diameter. The aluminium makes the pipe malleable similar to copper. Once a second adhesive layer is applied, an external high density polyethylene layer with UV protection is extruded to protect the pipe and make it resistant to external agents.

The pipe is produced in nominal pipe diameters of ½" - ¾" - 1". and in 328 ft coils or 10 ft straight lengths.

## TiteFit™ FITTINGS

The fittings consist of:

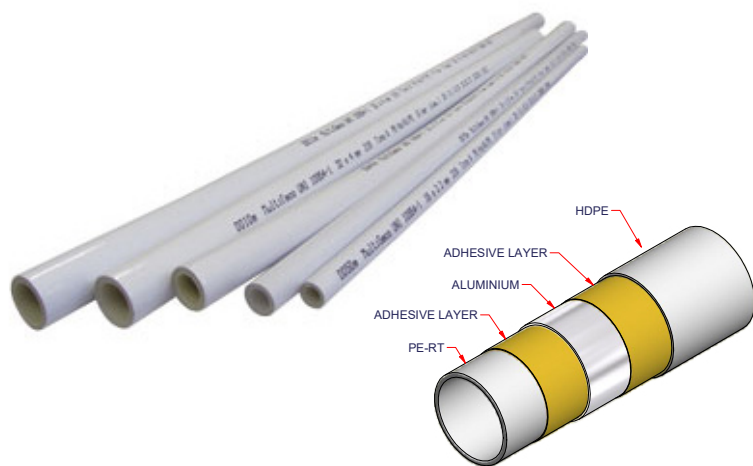
- Nylon ring nut
- Plastic washer
- Stainless steel spacer
- Brass seal carrier
- EPDM O-rings
- Brass body for threaded fittings / PPSU Body for non-threaded fittings



A pressure-tight seal is guaranteed by the compression of the outer sleeve of the fitting on the pipe end that is obtained by compressing the stainless steel bushing of the fitting.



# 1. PIPING



## MULTILAYER PIPE STICK

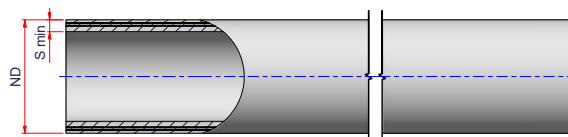
Pipe structure: Multilayer pipe with UV protection

Material: PE-RT / Welded Aluminum / PE 4710

Color: UV Resistant White

Range: From  $\varnothing$  ½" to  $\varnothing$  1"

Packaging: Straight length 10 ft



Code	Ø	Weight lb/ft	Pack	S min Pipe	Price per ft
01TFLEX16B10	½" (16 mm)	0.075	10 ft	0.078	\$ 2.10
01TFLEX20B10	¾" (20 mm)	0.105	10 ft	0.078	\$ 2.90
01TFLEX25B10	1" (25 mm)	0.143	10 ft	0.098	\$ 5.50



## MULTILAYER PIPE COILS

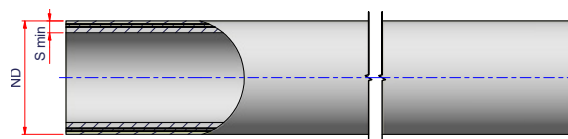
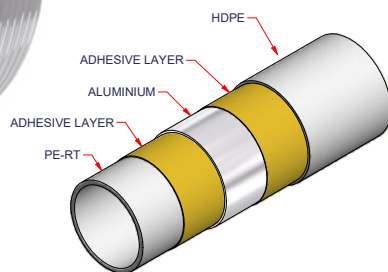
Pipe structure: Multilayer pipe with UV protection

Material: PE-RT / Welded Aluminum / PE 4710

Color: UV Resistant White

Range: From  $\varnothing$  ½" to  $\varnothing$  1"

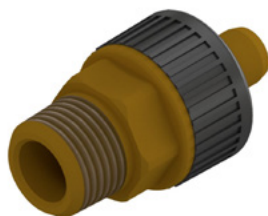
Packaging: Coils 328 ft



Code	Ø	Weight lb/ft	Pack	S min Pipe	Price per ft
01TFLEX16R328	½" (16 mm)	0.075	328 ft	0.078	\$ 2.05
01TFLEX20R328	¾" (20 mm)	0.105	328 ft	0.078	\$ 2.70
01TFLEX25R328	1" (25 mm)	0.143	328 ft	0.098	\$ 5.35



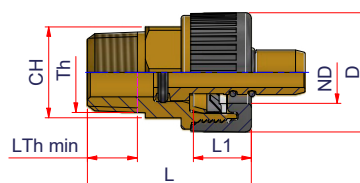
## 2. TiteFit™ FITTINGS



### MALE THREADED ADAPTER

Range: From  $\varnothing 1/2"$  x  $1/2"$  NPT to  $\varnothing 1"$  x  $3/4"$  NPT

Material: Nylon + Standard Brass



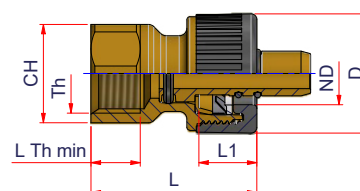
Code	Ø	ND	S min Pipe	Th	LTh	L1	L	D	Price Each
01FRFM1612NPT	$1/2"$ (16 mm) x $1/2"$ NPT	$1/2"$	0.078	$1/2"$ NPT	0.52	0.590	1.73	1.24	\$ 8.70
01FRFM2012NPT	$3/4"$ (20 mm) x $1/2"$ NPT	$1/2"$	0.078	$1/2"$ NPT	0.52	0.623	1.77	1.54	\$ 10.95
01FRFM2034NPT	$3/4"$ (20 mm) x $3/4"$ NPT	$3/4"$	0.078	$3/4"$ NPT	0.57	0.623	1.77	1.54	\$ 12.90
01FRFM2534NPT	$1"$ (25 mm) x $3/4"$ NPT	$1"$	0.098	$3/4"$ NPT	0.57	0.623	1.97	1.72	\$ 18.00



### FEMALE THREADED ADAPTER

Range: From  $\varnothing 1/2"$  x  $1/2"$  NPT to  $\varnothing 1"$  x  $3/4"$  NPT

Material: Nylon + Standard Brass

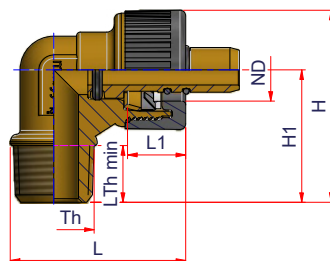


Code	Ø	ND	S min Pipe	Th	LTh	L1	L	D	Price Each
01FRFF1612NPT	$1/2"$ (16 mm) x $1/2"$ NPT	$1/2"$	0.078	$1/2"$ NPT	0.53	0.590	1.73	1.24	\$ 10.55
01FRFF2012NPT	$3/4"$ (20 mm) x $1/2"$ NPT	$3/4"$	0.078	$1/2"$ NPT	0.53	0.623	1.77	1.54	\$ 12.95
01FRFF2034NPT	$3/4"$ (20 mm) x $3/4"$ NPT	$3/4"$	0.078	$3/4"$ NPT	0.55	0.623	1.97	1.54	\$ 16.90
01FRFF2534NPT	$1"$ (25 mm) x $3/4"$ NPT	$1"$	0.098	$3/4"$ NPT	0.55	0.623	2.05	1.72	\$ 21.60

## MALE THREADED 90° ELBOW

Range: From  $\varnothing 1/2"$  x  $1/2"$  NPT to  $\varnothing 1"$  x  $3/4"$  NPT

Material: Nylon + Standard Brass

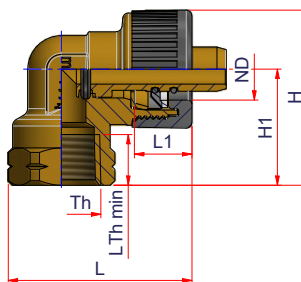


Code	Ø	ND	S min Pipe	Th	LTh	L1	L	H1	H	Price Each
01FGM1612NPT	$1/2"$ (16 mm) x $1/2"$ NPT	$1/2"$	0.078	$1/2"$ NPT	0.52	0.590	1.81	1.38	1.97	\$ 11.55
01FGM2034NPT	$3/4"$ (20 mm) x $3/4"$ NPT	$3/4"$	0.078	$3/4"$ NPT	0.57	0.623	2.00	1.50	2.26	\$ 17.05
01FGM2534NPT	$1"$ (25 mm) x $3/4"$ NPT	$1"$	0.098	$3/4"$ NPT	0.57	0.623	2.49	1.57	2.44	\$ 22.10

## FEMALE THREADED 90° ELBOW

Range: From  $\varnothing 1/2"$  x  $1/2"$  NPT to  $\varnothing 1"$  x  $\varnothing 3/4"$  NPT

Material: Nylon + Standard Brass



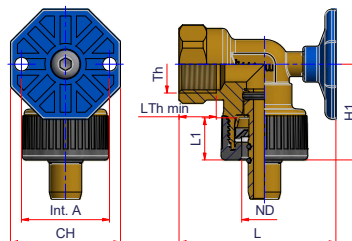
Code	Ø	ND	S min Pipe	Th	LTh	L1	L	H1	H	Price Each
01FGF1612NPT	$1/2"$ (16 mm) x $1/2"$ NPT	$1/2"$	0.078	$1/2"$ NPT	0.53	0.590	1.93	1.22	1.85	\$ 13.20
01FGF2012NPT	$3/4"$ (20 mm) x $1/2"$ NPT	$3/4"$	0.078	$1/2"$ NPT	0.53	0.623	2.09	1.34	2.11	\$ 15.05
01FGF2034NPT	$3/4"$ (20 mm) x $3/4"$ NPT	$3/4"$	0.078	$3/4"$ NPT	0.55	0.623	2.28	1.42	2.19	\$ 19.35
01FGF2534NPT	$1"$ (25 mm) x $3/4"$ NPT	$1"$	0.098	$3/4"$ NPT	0.55	0.623	2.30	1.42	2.20	\$ 27.50



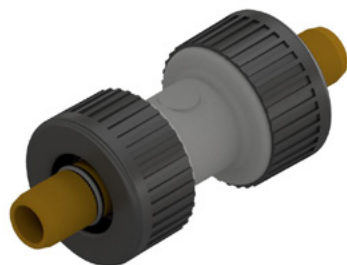
## FEMALE THREADED 90° ELBOW WITH BRACKET

Range:  $\varnothing \frac{1}{2}" \times \frac{1}{2}"$  NPT and  $\varnothing \frac{3}{4}" \times \frac{1}{2}"$  NPT

Material: Nylon + Standard Brass



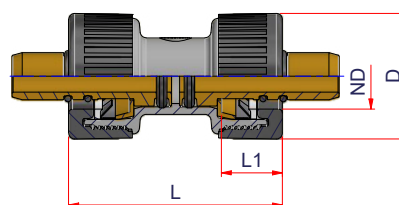
Code	$\varnothing$	ND	S min Pipe	Th	LTh	L1	L	H1	H	Price Each
01FGTDF1612NPT	$\frac{1}{2}"$ (16 mm) $\times \frac{1}{2}"$ NPT	$\frac{1}{2}"$	0.078	$\frac{1}{2}"$ NPT	0.53	0.590	1.93	1.22	1.85	\$ 16.50
01FGTDF2012NPT	$\frac{3}{4}"$ (20 mm) $\times \frac{1}{2}"$ NPT	$\frac{3}{4}"$	0.078	$\frac{1}{2}"$ NPT	0.53	0.623	2.09	1.34	2.11	\$ 19.25



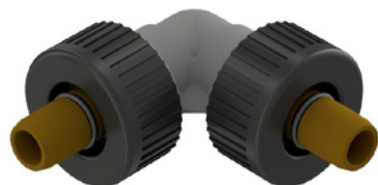
## COUPLING

Range: From  $\varnothing \frac{1}{2}"$  to  $\varnothing 1"$

Material: Nylon + PPSU + Standard Brass



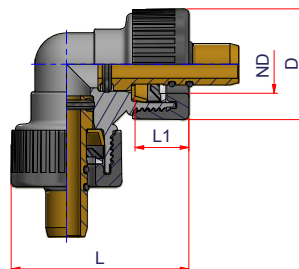
Code	$\varnothing$	ND	S min Pipe	L1	L	D	Price Each
01FMAN16	$\frac{1}{2}"$ (16 mm)	$\frac{1}{2}"$	0.078	0.590	2.13	1.24	\$ 12.65
01FMAN20	$\frac{3}{4}"$ (20 mm)	$\frac{3}{4}"$	0.078	0.623	2.20	1.54	\$ 16.50
01FMAN25	1" (25 mm)	1"	0.098	0.623	2.24	1.72	\$ 24.95



## 90° ELBOW

Range: From  $\varnothing \frac{1}{2}$ " to  $\varnothing 1$ "

Material: Nylon + PPSU + Standard Brass



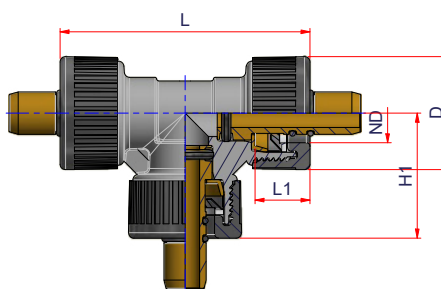
Code	$\varnothing$	ND	S min Pipe	L1	L	D	Price Each
01FG16	$\frac{1}{2}$ " (16 mm)	$\frac{1}{2}$ "	0.078	0.590	1.99	1.24	\$ 13.75
01FG20	$\frac{3}{4}$ " (20 mm)	$\frac{3}{4}$ "	0.078	0.623	2.26	1.54	\$ 18.15
01FG25	1" (25 mm)	1"	0.098	0.623	2.36	1.72	\$ 24.40



## TEE

Range: From  $\varnothing \frac{1}{2}$ " to  $\varnothing 1$ "

Material: Nylon + PPSU + Standard Brass



Code	$\varnothing$	ND	S min Pipe	L1	L	D	H1	Price Each
01FT16	$\frac{1}{2}$ " (16 mm)	$\frac{1}{2}$ "	0.078	0.590	2.76	1.24	1.38	\$ 18.25
01FT20	$\frac{3}{4}$ " (20 mm)	$\frac{3}{4}$ "	0.078	0.623	3.03	1.54	1.52	\$ 23.00
01FT25	1" (25 mm)	1"	0.098	0.623	3.13	1.72	1.57	\$ 41.90



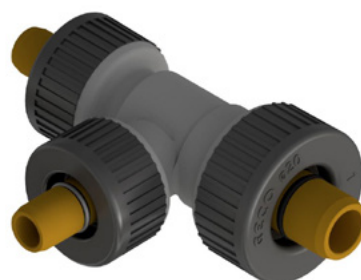
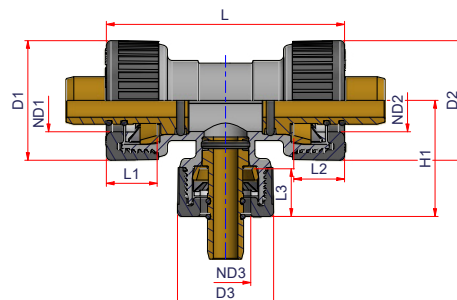
## REDUCING TEE

Range: From  $\varnothing \frac{3}{4}" \times \frac{1}{2}" \times \frac{1}{2}"$  to  $\varnothing 1" \times \frac{1}{2}" \times 1"$

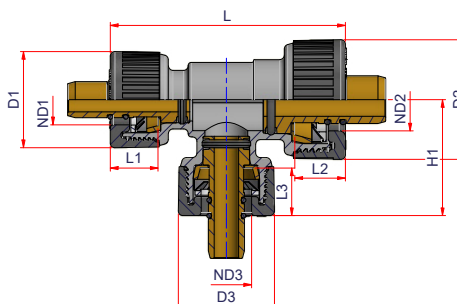
Material: Nylon + PPSU + Standard Brass



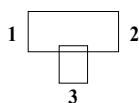
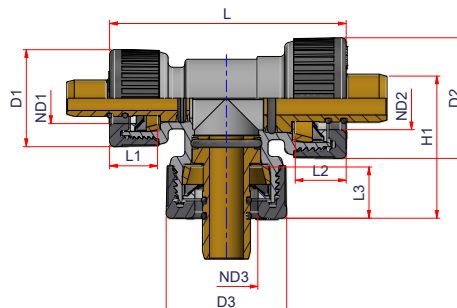
(A)



(B)



(C)



Code	TYPE	$\varnothing$ (ND1 x ND2 x ND3)	S min Pipe 1	S min Pipe 2	S min Pipe 3	L1	L2	L3	L	D1	D2	D3	H2	Price Each
01FTR201616	B	$\frac{1}{2}"$ (16 mm) x $\frac{3}{4}"$ (20 mm) x $\frac{1}{2}"$ (16 mm)	0.078	0.078	0.078	0.590	0.623	0.590	3.03	1.24	1.54	1.24	1.52	\$ 23.00
01FTR201620	A	$\frac{3}{4}"$ (20 mm) x $\frac{3}{4}"$ (20 mm) x $\frac{1}{2}"$ (16 mm)	0.078	0.078	0.078	0.623	0.623	0.590	3.03	1.54	1.54	1.24	1.50	\$ 23.00
01FTR202016	C	$\frac{1}{2}"$ (16 mm) x $\frac{3}{4}"$ (20 mm) x $\frac{3}{4}"$ (20 mm)	0.078	0.078	0.078	0.590	0.623	0.623	3.03	1.24	1.54	1.54	1.52	\$ 23.00
01FTR251616	B	$\frac{1}{2}"$ (16 mm) x 1" (25 mm) x $\frac{1}{2}"$ (16 mm)	0.078	0.098	0.078	0.590	0.623	0.590	3.11	1.24	1.72	1.24	1.54	\$ 41.90
01FTR251625	A	1" (25 mm) x 1" (25 mm) x $\frac{1}{2}"$ (16 mm)	0.098	0.098	0.078	0.623	0.623	0.590	3.11	1.72	1.72	1.24	1.57	\$ 41.90
01FTR252025	A	1" (25 mm) x 1" (25 mm) x $\frac{3}{4}"$ (20 mm)	0.098	0.098	0.078	0.623	0.623	0.623	3.11	1.72	1.72	1.54	1.57	\$ 41.90
01FTR252516	C	$\frac{1}{2}"$ (16 mm) x 1" (25 mm) x 1" (25 mm)	0.078	0.098	0.098	0.590	0.623	0.623	3.25	1.24	1.72	1.72	1.61	\$ 41.90

All measures are in inches unless otherwise mentioned.

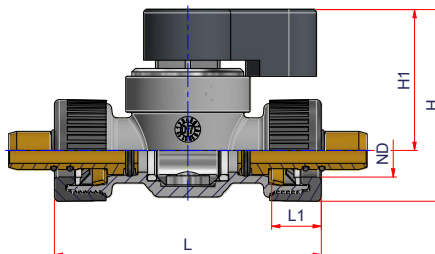
We reserve the right to vary dimensions without notice; check the web site for the updated dimensions.



## BALL VALVE

Range: From  $\varnothing \frac{1}{2}"$  and  $\varnothing \frac{3}{4}"$

Material: Nylon + PPSU + Standard Brass



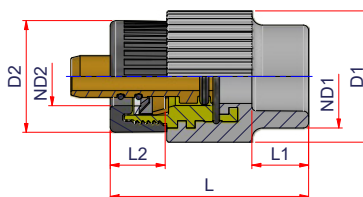
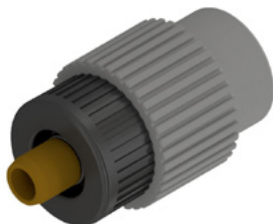
Code	$\varnothing$	ND	S min Pipe	L1	L	H1	H	Price Each
01FRS16	$\frac{1}{2}"$ (16 mm)	$\frac{1}{2}"$	0.078	0.590	3.27	1.69	2.30	\$ 49.40
01FRS20	$\frac{3}{4}"$ (20 mm)	$\frac{3}{4}"$	0.078	0.623	3.27	1.69	2.46	\$ 54.90

## TRANSITION COUPLING

### SOCKET POLYPROPYLENE TO FLEXTITE

Range: From  $\varnothing \frac{1}{2}" \times \frac{1}{2}"$  to  $\varnothing 1" \times 1"$

Material: Nylon + PPSU + Standard Brass

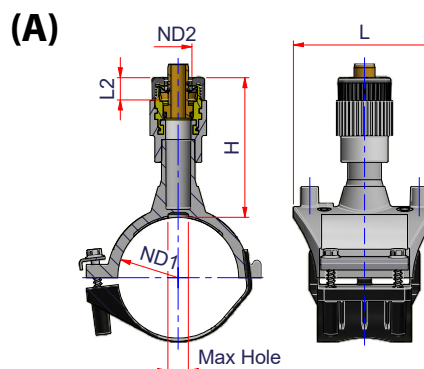


Code	$\varnothing$	ND1	ND2	S min Pipe 2	L1	L2	L	D1	D2	Price Each
01FMANT2016	$\frac{1}{2}"$ PP to $\frac{1}{2}"$ Flex	$\frac{1}{2}"$ PP (20 mm)	$\frac{1}{2}"$ Flex (16 mm)	0.078	0.63	0.590	2.24	1.46	1.24	\$ 17.60
01FMANT2020	$\frac{1}{2}"$ PP to $\frac{3}{4}"$ Flex	$\frac{1}{2}"$ PP (20 mm)	$\frac{3}{4}"$ Flex (20 mm)	0.078	0.63	0.623	2.24	1.46	1.54	\$ 18.70
01FMANT2516	$\frac{3}{4}"$ PP to $\frac{1}{2}"$ Flex	$\frac{3}{4}"$ PP (25 mm)	$\frac{1}{2}"$ Flex (16 mm)	0.098	0.67	0.623	2.48	1.65	1.72	\$ 28.60
01FMANT2520	$\frac{3}{4}"$ PP x $\frac{3}{4}"$ Flex	$\frac{3}{4}"$ PP (25 mm)	$\frac{3}{4}"$ Flex (20 mm)	0.078	0.67	0.623	2.48	1.65	1.54	\$ 29.70
01FMANT2525	$\frac{3}{4}"$ PP x 1" Flex	$\frac{3}{4}"$ PP (25 mm)	1" Flex (25 mm)	0.098	0.67	0.623	2.48	1.65	1.72	\$ 29.70
01FMANT3225	1" PP x 1" Flex	1" PP (32 mm)	1" Flex (25 mm)	0.098	0.79	0.623	2.95	2.13	1.72	\$ 33.00

## ELECTROFUSION TRANSITION SADDLE POLYPROPYLENE TO FLEXTITE

Range: From  $\varnothing 1\frac{1}{2}" \times \frac{1}{2}"$  to  $\varnothing 3" \times 1"$

Material: Nylon + PP-RCT + Standard Brass



Code	TYPE	$\varnothing$	ND1	ND2	S min Pipe 2	L2	L	H	Max Hole	Price Each
01FCOLT5016	A	1½" (50 mm) x ½" (16 mm)	1½"	½"	0.078	0.590	3.94	3.63	0.63	\$ 98.00
01FCOLT5020	A	1½" (50 mm) x ¾" (20 mm)	1½"	¾"	0.078	0.623	3.94	3.63	0.63	\$ 103.75
01FCOLT5025	A	1½" (50 mm) x 1" (25 mm)	1½"	1"	0.098	0.623	3.94	3.63	0.63	\$ 109.45
01FCOLT6316	A	2" (63 mm) x ½" (16 mm)	2"	½"	0.078	0.590	3.94	3.63	0.63	\$ 103.75
01FCOLT6320	A	2" (63 mm) x ¾" (20 mm)	2"	¾"	0.078	0.623	3.94	3.63	0.63	\$ 109.45
01FCOLT6325	A	2" (63 mm) x 1" (25 mm)	2"	1"	0.098	0.623	3.94	3.63	0.63	\$ 115.25
01FCOLT7516	A	2½" (75 mm) x ½" (16 mm)	2½"	½"	0.078	0.590	3.94	4.11	0.63	\$ 109.45
01FCOLT7520	A	2½" (75 mm) x ¾" (20 mm)	2½"	¾"	0.078	0.623	3.94	4.11	0.63	\$ 115.25
01FCOLT7525	A	2½" (75 mm) x 1" (25 mm)	2½"	1"	0.098	0.623	3.94	4.11	0.63	\$ 121.00
01FCOLT9016	A	3" (90 mm) x ½" (16 mm)	3"	½"	0.078	0.590	4.17	4.26	0.63	\$ 144.05
01FCOLT9020	A	3" (90 mm) x ¾" (20 mm)	3"	¾"	0.078	0.623	4.17	4.26	0.63	\$ 149.80
01FCOLT9025	A	3" (90 mm) x 1" (25 mm)	3"	1"	0.098	0.623	4.17	4.26	0.63	\$ 155.55

...

All measures are in inches unless otherwise mentioned.

We reserve the right to vary dimensions without notice; check the web site for the updated dimensions.



## ELECTROFUSION TRANSITION SADDLE

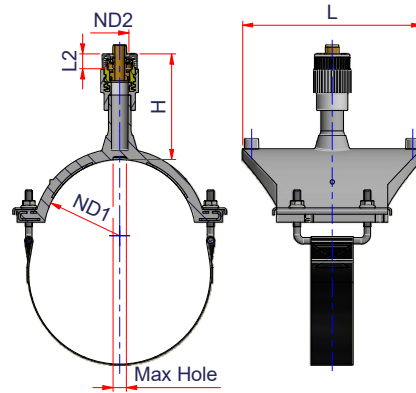
### POLYPROPYLENE TO FLEXTITE

Range: From  $\varnothing 1\frac{1}{2}'' \times 1\frac{1}{2}''$  to  $\varnothing 8'' \times 1''$

Material: Nylon + PP-RCT + Standard Brass



(B)



Code	TYPE	Ø	ND1	ND2	S min Pipe 2	L2	L	H	Max Hole	Price Each
01FCOLT11016	B	4" (110 mm) x 1/2" (16 mm)	4"	1/2"	0.078	0.590	5.51	4.54	0.63	\$ 178.60
01FCOLT11020	B	4" (110 mm) x 3/4" (20 mm)	4"	3/4"	0.078	0.623	5.51	4.54	0.63	\$ 184.40
01FCOLT11025	B	4" (110 mm) x 1" (25 mm)	4"	1"	0.098	0.623	5.51	4.54	0.63	\$ 190.15
01FCOLT12516	B	5" (125 mm) x 1/2" (16 mm)	5"	1/2"	0.078	0.590	5.51	4.54	0.63	\$ 184.40
01FCOLT12520	B	5" (125 mm) x 3/4" (20 mm)	5"	3/4"	0.078	0.623	5.51	4.54	0.63	\$ 190.15
01FCOLT12525	B	5" (125 mm) x 1" (25 mm)	5"	1"	0.098	0.623	5.51	4.54	0.63	\$ 195.90
01FCOLT16016	B	6" (160 mm) x 1/2" (16 mm)	6"	1/2"	0.078	0.590	5.51	5.02	0.63	\$ 190.15
01FCOLT16020	B	6" (160 mm) x 3/4" (20 mm)	6"	3/4"	0.078	0.623	5.51	5.02	0.63	\$ 195.90
01FCOLT16025	B	6" (160 mm) x 1" (25 mm)	6"	1"	0.098	0.623	5.51	5.02	0.63	\$ 201.65
01FCOLT20016	B	8" (200 mm) x 1/2" (16 mm)	8"	1/2"	0.078	0.590	5.51	5.02	0.63	\$ 224.70
01FCOLT20020	B	8" (200 mm) x 3/4" (20 mm)	8"	3/4"	0.078	0.623	5.51	5.02	0.63	\$ 230.45
01FCOLT20025	B	8" (200 mm) x 1" (25 mm)	8"	1"	0.098	0.623	5.51	5.02	0.63	\$ 236.25



### 3. SPARE PARTS



#### RING NUT

Range: From  $\varnothing \frac{1}{2}"$  to  $\varnothing 1"$   
Material: Nylon

Code	$\varnothing$	Price Each
26TGH16	$\frac{1}{2}"$ (16 mm)	\$ 3.25
26TGH20	$\frac{3}{4}"$ (20 mm)	\$ 3.70
26TGH25	1" (25 mm)	\$ 4.10



#### BRASS SEAL CARRIER

Material: Brass + EPDM

Code	$\varnothing$	Price Each
31FA15160T	$\frac{1}{2}"$ (16 mm)	\$ 15.25
31FA22200T	$\frac{3}{4}"$ (20 mm)	\$ 16.20
31FA25250T	1" (25 mm)	\$ 17.35



#### COMPLETE SPARE KIT

Material: EPDM o'ring + Stainless steel + Plastic

Notes: kit composed by plastic washer, spacer and o'ring

Code	$\varnothing$	Price Each
01FKIT16	$\frac{1}{2}"$ (16 mm)	\$ 3.40
01FKIT20	$\frac{3}{4}"$ (20 mm)	\$ 3.60
01FKIT25	1" (25 mm)	\$ 4.20

## 4. EQUIPMENT

**UNIVERSAL REAMER**Range: From  $\varnothing \frac{1}{2}$ " to  $\varnothing 1$ "

Material: Metal

Code	$\varnothing$	Price Each
00ALES16202526YU	$\frac{1}{2} - \frac{3}{4}$ " - 1"	\$125.00

**LUBRICATING GREASE**

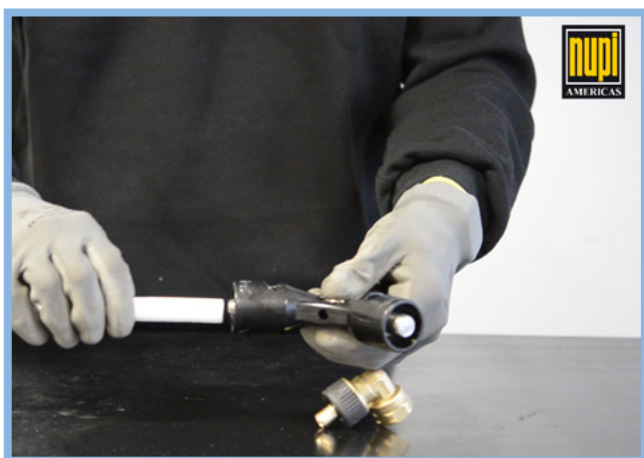
Material: Consult factory for MSDS sheet

Code	lb	Price Each
00SL		\$ 47.50

## 5. FASTER INSTALLATION IN 3 STEPS



1. Lubricate the universal reamer with the appropriate lubricating grease. Alternatively you can apply soapy water onto the TiteFit™ fitting.



2. Calibrate and chamfer the pipe with the universal reamer.



3. Insert the TiteFit™ fitting into the pipe until the stop.

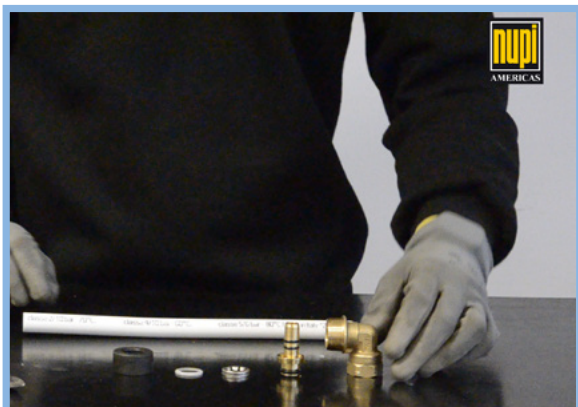
## 6. FASTER REPLACEMENT



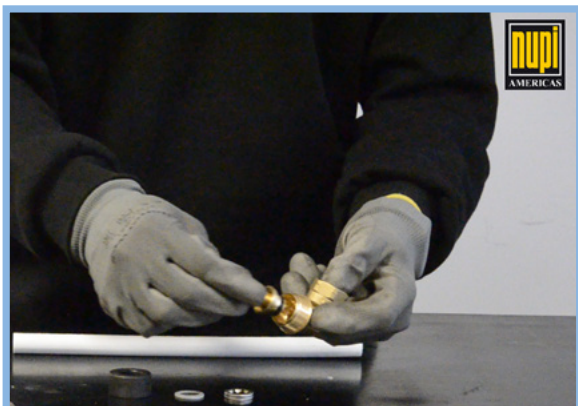
1. Unscrew and remove the ring nut.



2. Using a plier cut the spacer.

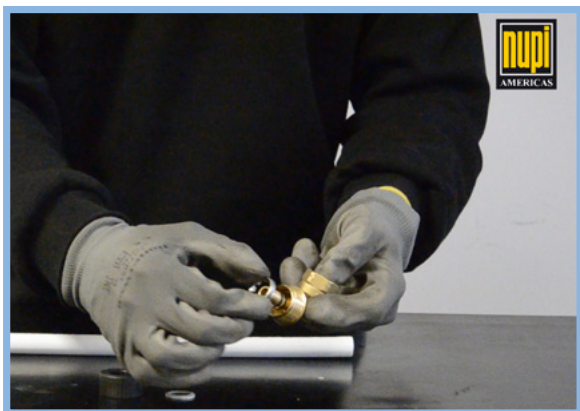


3. Remove all the internal parts and replace the spacer with a new replacement part.

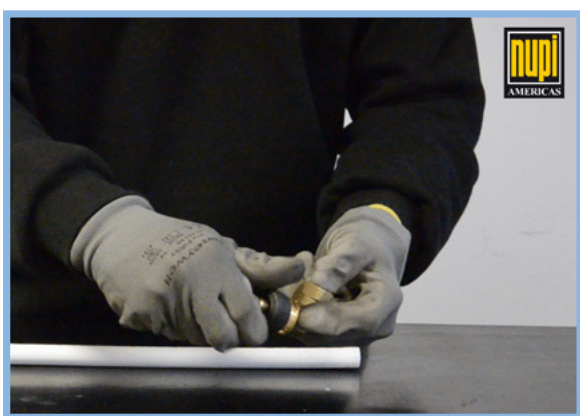


4. Insert the brass seal carrier into the TiteFit™ fitting.





5. Insert the new spacer and the washer into the Titefit fitting.



6. Screw the ring nut



7. Insert the TiteFit™ fitting into the pipe until the stop.



**FREIGHT CONDITIONS:** FlexTite orders are shipped F.O.B. Shipping Point. Once the material leaves our dock it becomes the property and responsibility of the consignee. If freight is lost, or damaged, all freight claims must be filed by the consignee. When shipping to a job site, freight will be third party billed. CUSTOMERS WILL HAVE ONE WEEK FROM THE DATE OF RECEIPT OF AN ORDER TO REPORT LOST, MISSING OR DAMAGED MATERIALS FROM THE SHIPMENT.

**FULL FREIGHT ALLOWANCE:** To meet the full freight allowance, FlexTite orders must be for immediate complete shipment to one location within the contiguous United States or Canada. Each shipment for a project will be subject to the freight term stated below based on the amount of the follow-up order (i.e. the amount is not cumulative if follow-up orders are placed for the same project). Shipments to Alaska, Puerto Rico, Hawaii or for export are not freight allowed, except for the mainland portion of the freight. For shipments to Alaska, Hawaii, Puerto Rico or for export, the freight allowances shown below, for qualified items, are for shipment to East Coast, Gulf Coast or West Coast Ports only. Orders greater than \$50,000 net, involving pipe, will be freight allowed.

The above freight terms do not apply to air freight shipments or expedited shipments. Air freight shipments and expedited forms of delivery will be negotiated and agreed to in each circumstance. Customers may alternatively arrange for their own transportation, or may arrange for the freight to be billed to a third party account by specifying this on the purchase order. Next day air orders must be received by 2:00 p.m. EST to be accepted for next day service.

The minimum accepted net order amount shall be \$100 in all circumstances. For orders placed that are less than \$100, the net value of the order shall be increased by an amount so that the total order will be billed at \$100 plus the applicable amount for shipping percentage based on \$100 net order value. The customer will have 24 hours after notice of order confirmation to increase the amount or type of parts being ordered to be greater than or equal to \$100 to avoid the paying the surcharge.

**PAYMENT TERMS:** All invoices are due net 30 days from the date of the invoice, with all Past Due accounts subject to a service charge of 1.5% per month.

**RETURN POLICY:** All orders are non-returnable and non-cancellable.

**ORDER ACCEPTANCE:** No price list, literature, catalogue, website or other material describing our products is to be construed as an offer to sell same. Orders are subject to acceptance by us at our offices in Early Branch, SC. Your order, when shipped by us, shall be the complete contract between us, subject to, and incorporating therein, the terms and conditions, herein set forth, and any provisions or terms contained in the order submitted to us that are not consistent with our terms and conditions shall not be valid. Prices and discounts contained in any of our price lists or posted on our website are subject to change without notice.

**LIMITED WARRANTY:** Nupi Americas warrants that products sold by it which are included in its FlexTite Piping System shall be of good materials and workmanship and free from functional defects for a period of thirty (30) years from the date of sale, excepting valves, gaskets and o-rings; products other than pipes and fittings shall be of good materials and workmanship and free from functional defects for a period of one (1) year from the date of sale; provided that such products are properly installed in accordance with the specifications and published instructions of Nupi Americas by qualified installers who have been trained and certified by Nupi Americas or its authorized representatives. These respective warranties shall become immediately null and void if the products to which they apply due to any of the following: (i) are employed in applications not recommended by Nupi Americas; (ii) are installed by anyone other than an installer trained and certified by Nupi Americas or its authorized representatives; (iii) were installed in a manner which fails to comply with written installation instructions of Nupi Americas; (iv) were installed in a manner that does not comply with common installation or use practices and existing building and plumbing codes and legal requirements; (v) was not at all times used in a manner consistent with its intended use; (vi) was not at all times used in installations and environments acceptable to its material and design specifications; (vii) was modified, altered or repaired

by anyone other than the Seller; (viii) was not properly subjected to and passed common testing methods (including pressure testing recommendations of Nupi Americas and the authority having local jurisdiction) immediately after the product's installation and before the product is put into service. In the event of a system malfunction or leak caused by defective Nupi Americas' warranted materials (and not by incorrect installation, incorrect handling procedures or by jobsite or installation damage), a reasonable amount will be allowed for repair materials and repair labor as long as the amount is pre-approved by Nupi Americas. In order to qualify for a warranty remedy described in the previous sentence, you must contact Nupi Americas in advance and receive a written authorization for this remedy from an authorized Nupi Americas' representative. Repair materials, repair labor and freight expenses not authorized in writing in advance by Nupi Americas in this way will not be compensated. Note that Nupi Americas limits its warranty to its piping, valves and

accessories, fittings, insulation, jacketing and field connections that are properly made in accordance with the written instructions of Nupi Americas by an installer who is trained and certified by Nupi Americas or its authorized representatives, subject to the other limitations described above.

Evidence of tampering, mishandling, misuse or abuse, neglect, accidental damage, freeze damage or unauthorized repairs that cause damage to Nupi Americas' warranted products will void any warranty coverage for those particular products.

Nupi Americas provides a complete preinsulated pipe system offering so that it is possible to complete an installation with Nupi Americas' products. However, it is possible that other manufacturers' will be interconnected to the FlexTite preinsulated pipe system in any given installation. The FlexTite product in the given installation will continue to be covered under this warranty. In a combined system, Nupi Americas will be responsible only for proven defects in material or workmanship in the Nupi Americas products. Products manufactured by another company should be reported to that manufacturer for its warranty response.

These limited warranties are in lieu of all other warranties, express or implied, including, without limitation, those concerning merchantability or fitness for a particular purpose. These limited warranties are also in lieu of any other possible liabilities of Nupi Americas, whether alleged to have arisen by agreement or by operation of law, respecting the sale, installation, use or function of Nupi Americas' products, including, without limitation, claims of negligence, gross negligence, strict liability or any other tort.

**LIMITATION OF LIABILITY:** If a claim arises as the result of a product defect, Nupi Americas shall cover losses caused to third parties for property damages and bodily injury or incidental damages in those situations where Nupi America's Liability Insurance Policy provides coverage for such losses, up to the coverage amounts provided in such policy and subject to all of the terms, conditions and exclusions of such policy (Policy ITCANY05134 Issued by ACE European Group, Ltd., A Chubb Company).

No person is authorized by Nupi Americas to accept for it any other liability of any kind in connection with the sale or use of products sold and/or marketed by it.

All requests and notices under this Warranty shall be directed to: Nupi Americas. Attn: Customer Service 314 Commerce Parkway, Early Branch, SC 29916; Tel: 803-398-3579. Fax: 803-398-3639

**SHIPPING DATES – DELAYS – SHORTAGE CLAIMS:** Promises of shipping dates are estimates, and as such, cannot be guaranteed. Nupi Americas will not be liable for any delay in a delivery. Any claims for shipping errors, shortages or defects must be made to Nupi Americas within 24 hours of receipt of the goods. Buyer shall be required to make timely payment to seller of any amount which is undisputed, or not subject to such claims.

**TAXES:** Any sales or manufacturers' taxes are to be paid by the buyer, including those imposed under any future statutes.



## **Nupi Americas, Inc.**

314 Commerce Parkway  
Early Branch - SC 29916 - U.S.A.  
ph. +1 803-398-3579  
fax: +1 803 398 3639

[info@nupiamericas.com](mailto:info@nupiamericas.com)  
[www.nupiamericas.com](http://www.nupiamericas.com)

